



Fitzjohns Avenue, NW3

£4,995 Per calendar month

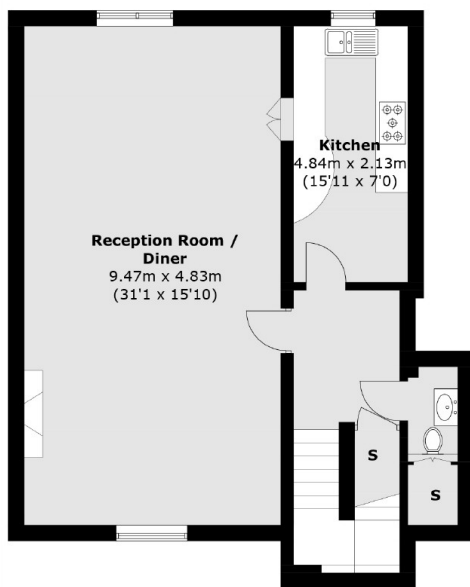
A stunning top-floor, split-level three-bedroom flat featuring a spacious roof terrace and access to a communal garden with a swimming pool. This property offers a double reception room with wooden flooring, a separate kitchen, and a WC. Upstairs, you'll find three generous double bedrooms and two modern bathrooms, one of which is ensuite.

The flat is located a short walk to Swiss Cottage tube station giving you quick access to the City and Central London on the Jubilee Line.

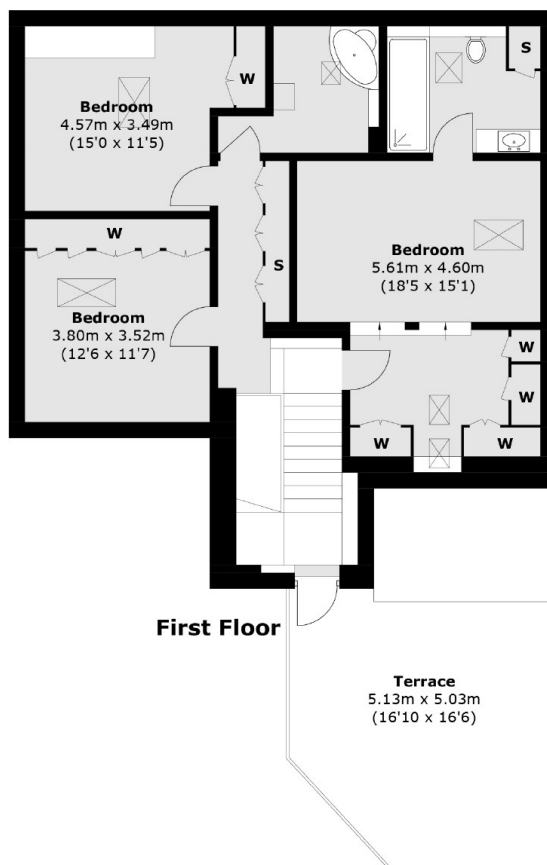
Features

- Three Double Bedrooms
- Large Reception Room
- Separate Kitchen
- Two Bathrooms
- Swimming Pool
- Good Transport Links

Fitzjohns Avenue, London, NW3



Ground Floor



First Floor

Total area (approx.): 156 sq. m (1,679.1 sq. ft)
Terrace (approx.): 30.9 sq. m (332.6 sq. ft)