



Elliott Square, NW3  
£1,950,000



## Elliott Square, NW3

A very well presented, five double bedroom, three bathroom, end-of-terrace town house located on a quiet residential square in Primrose Hill. The property has air conditioning, off street parking, is in very good condition and is being sold with no onward chain.

The entrance hall leads to a large, bright, extended, open-plan kitchen and reception which leads on to the private garden. There is off street parking at the front and a guest WC on the ground level.

The two large double bedrooms share a bathroom on the first floor and the second floor has the two smaller bedrooms sharing another and the master bedroom, which has an en-suite shower room.

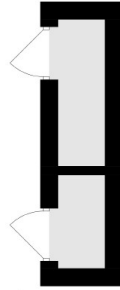
Elliot Square is located only 0.2 miles from Primrose Hill with spectacular views over Regents Park and the city beyond. The house has an amazing choice of cafés and local amenities on both Regents Park Road and England's Lane, both within 0.5 miles of the house, Swiss Cottage (Jubilee Line) is 0.4 miles away and Chalk Farm (Northern Line) is 0.6 miles away.

### Features

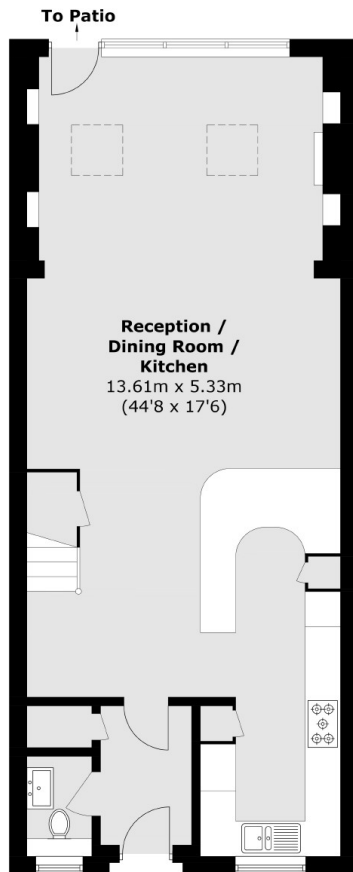
- Off Street Parking
- Open Plan Kitchen/Reception
- Town House
- Five Double Bedrooms
- Air Conditioning
- End of Terrace



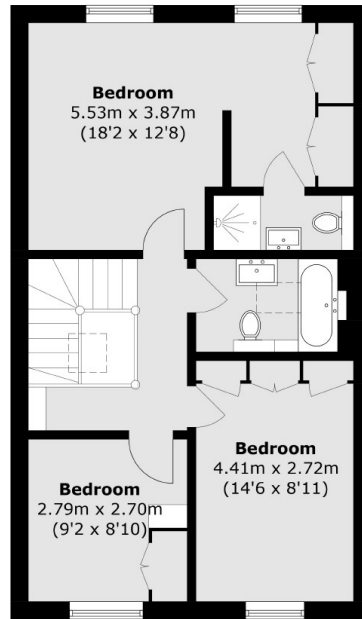
# Elliott Square, London, NW3



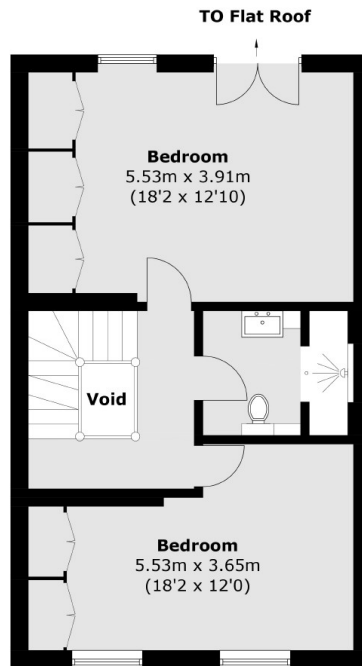
**Outdoor Storage**  
(Not Shown In Actual  
Location / Orientation)



**Ground Floor**



**Second Floor**



**First Floor**

Total area (approx.): 181.7 sq. m (1,955.7 sq. ft)

Outdoor Storage: 3.7 sq. m (39.8 sq. ft)  
(Including Void)