



Fleet Road, NW3 £950,000

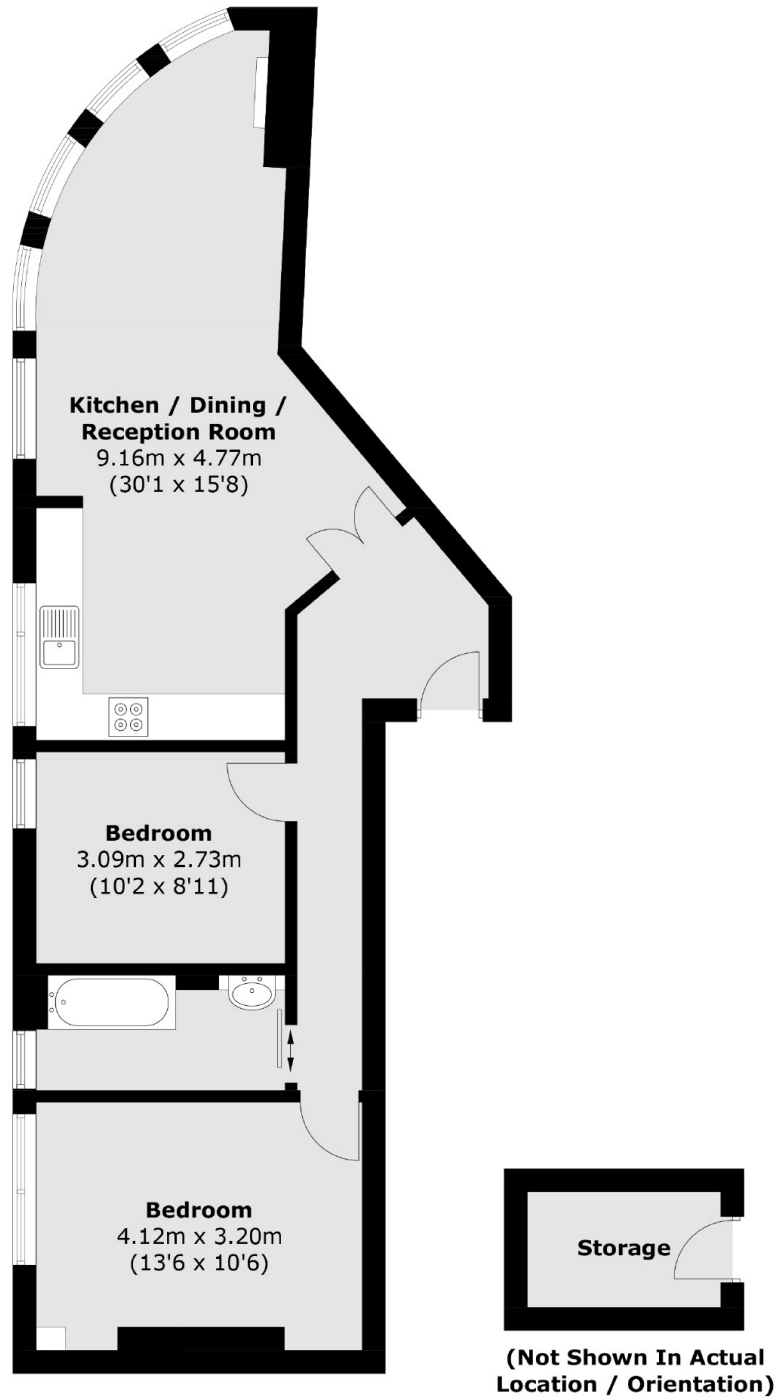
A stunning two bedroom apartment set on the first floor of this period conversion. The property has high ceilings, a 30' foot open plan kitchen / dining room and is being sold chain free.

In the heart of South End Green only 5 minutes' walk from the entrance to Hampstead Heath, as well as being within easy reach of both Belsize Park and Hampstead Village. Hampstead Heath Overground Station is only a 5 minute walk and Belsize Park (Zone 2 Northern Line) tube station, 10 minutes, providing excellent transport links to the City and West End.

Features

- Two Bedrooms
- Roof Terrace
- Storage Unit
- Good Condition
- High Ceilings
- Chain Free

Fleet Road,
London, NW3



Total area (approx.): 67.8 sq. m (729.8 sq. ft)
Storage (approx.): 3.8 sq. m (40.9 sq. ft)

Dexters

Hampstead
56 Heath Street
London
NW3 1DL
Sales
020 7433 0273

Energy Rating: D. We aim to make our particulars both accurate and reliable. However they are not guaranteed; nor do they form part of an offer or contract. If you require clarification on any points then please contact us, especially if you're traveling some distance to view. Please note that appliances and heating systems have not been tested and therefore no warranties can be given as to their good working order.

 **RICS** | Regulated
Estate Agent
and Letting Agent

dexters.co.uk