



## Mulberry Close, NW3

£2,000 Per calendar month

A unique one bedroom house in a cul-de-sac in the heart of Hampstead Village. With wood floors throughout, separate study and great storage this is the perfect property for professionals tenants working from home.

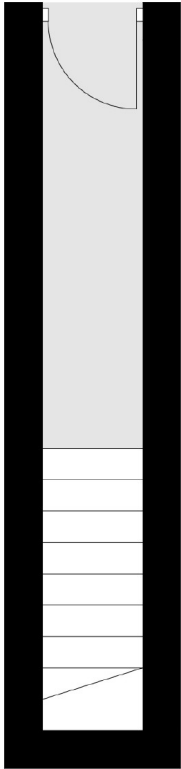
Excellently located between Hampstead Village and Belsize Park just off Hampstead High Street. Hampstead Heath is just half a mile away, and Hampstead Underground station is less than 500 yards away.

### Features

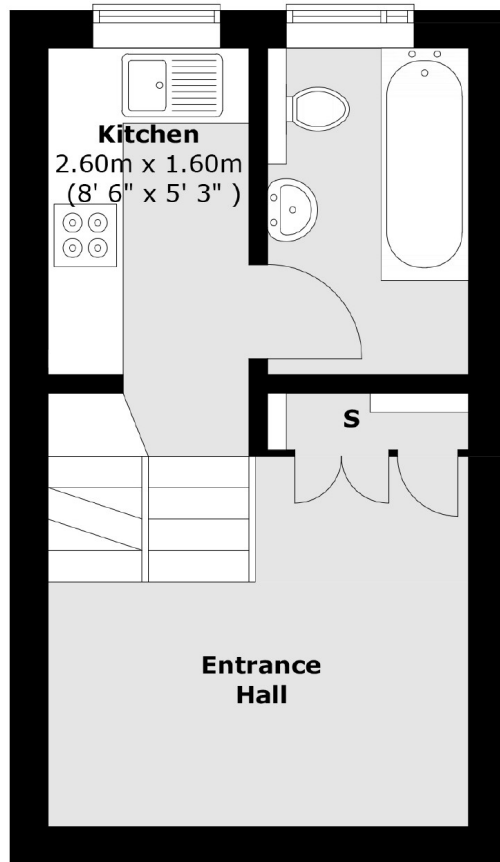
One Bedroom House  
Two Reception Rooms  
Wood Floors Throughout  
Modern Kitchen  
Good Storage  
Available Now

# Mulberry Close, London, NW3

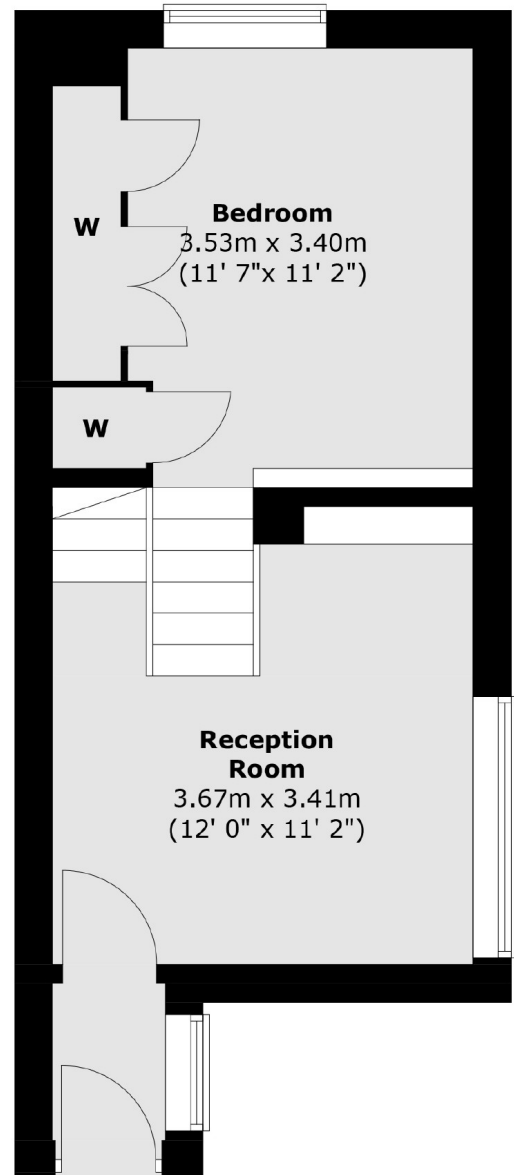
## Ground Floor



## First Floor



## Second Floor



Total area (approx.) : 52.8 sq. m (568 sq. ft)