



Platts Lane, NW3

£2,995,000

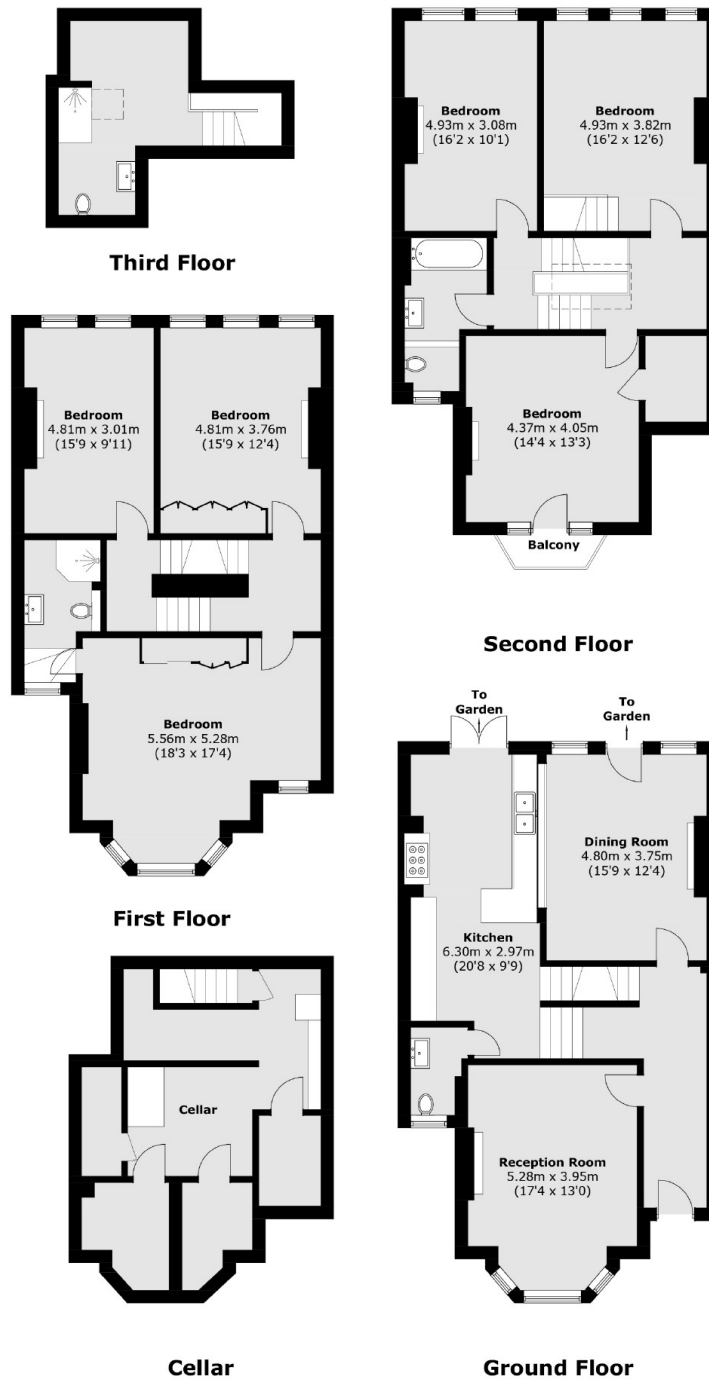
A spacious and excellently presented six bedroom, three bathroom house arranged over three floors with two receptions, a kitchen/breakfast room, private garden and a cellar/basement storage room.

Located close to Hampstead Village and the green open spaces of Hampstead Heath just a short walk away.

Features

Six Bedrooms
Three Bathrooms
Two Receptions
Garden
Kitchen/Breakfast Room
Excellently Presented

Platts Lane, London, NW3



Total area (approx.): 278.0 sq. m (2,992.1 sq. ft)
Balcony (approx.): 1.6 sq. m (17.2 sq. ft)