



Kidderpore Avenue, NW3

£825

On the first floor of this brand new landmark development is a stunning two bedroom apartment with a terrace. Along with the concierge residents have access to the gym, pool and spa facilities within the development.

Included in the development will be a shuttle bus to and from Hampstead and Finchley Road tubes convenient for those working long hours. Hampstead Heath is approx half a mile away to enjoy the open green spaces there.

Features

Two Bedrooms
Two Bathrooms
New Development
Terrace
Gym, Pool & Spa
Concierge



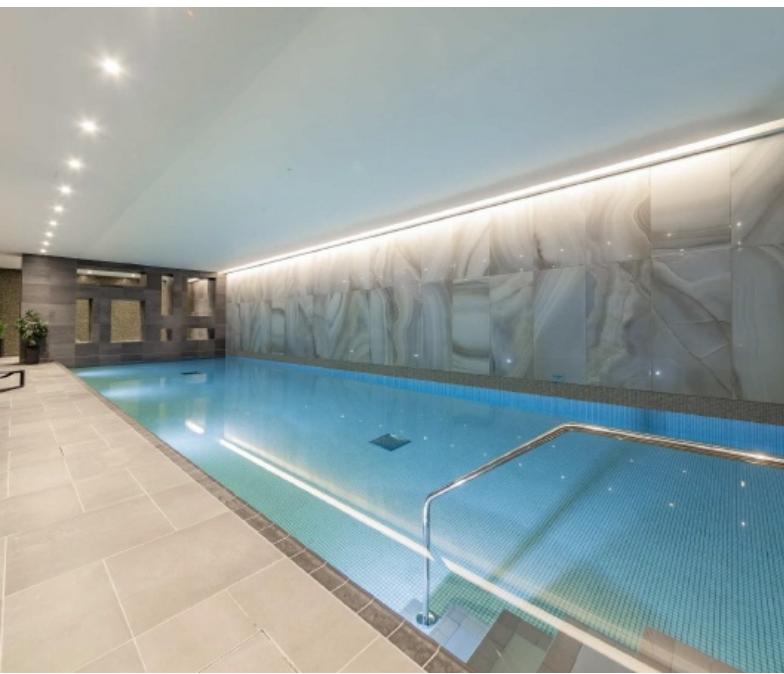
Kidderpore Avenue, London, NW3

Hampstead Manor is a brand new development occupying a historic site in Hampstead. The building has a 24 hour concierge office and on site facilities such as a gym, swimming pool, jacuzzi, steam room and sauna.

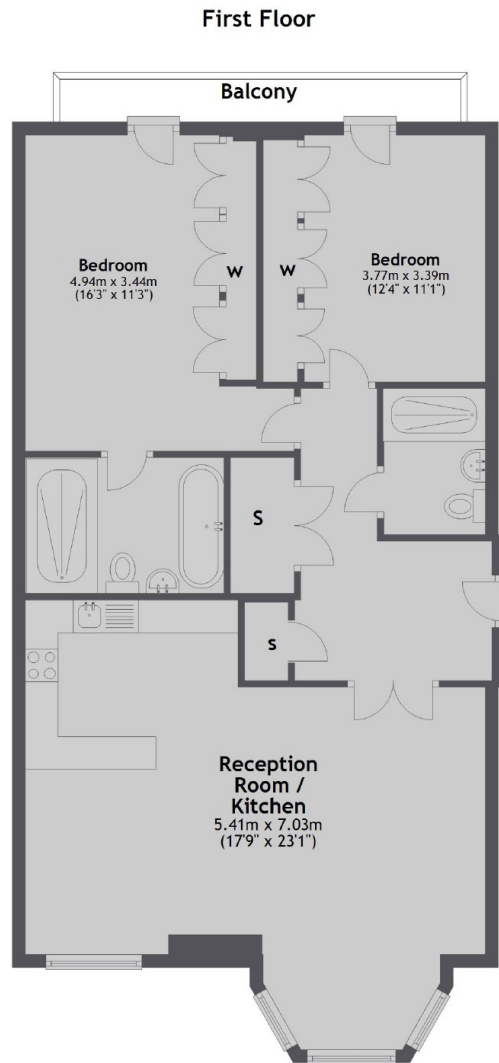
This two bedroom apartment has a bright and spacious reception with wood floors, bay window and an open plan kitchen that has all the appliances. Both bedrooms are doubles with fitted wardrobes and there are two bathrooms.

The apartment has good storage off the hallway and a private terrace overlooking the tennis courts at the rear of the building. Residents also have access to the beautifully maintained communal garden.





Kidderpore Avenue, London, NW3



Total area: approx. 90.4 sq. metres (973.0 sq. feet)

Contact

To arrange a viewing call our office on the number below or visit our website.



Energy Rating: B. We aim to make our particulars both accurate and reliable. However they are not guaranteed; nor do they form part of an offer or contract. If you require clarification on any points then please contact us, especially if you're traveling some distance to view. Please note that appliances and heating systems have not been tested and therefore no warranties can be given as to their good working order.