



Chesterford Gardens, NW3

£1,200,000

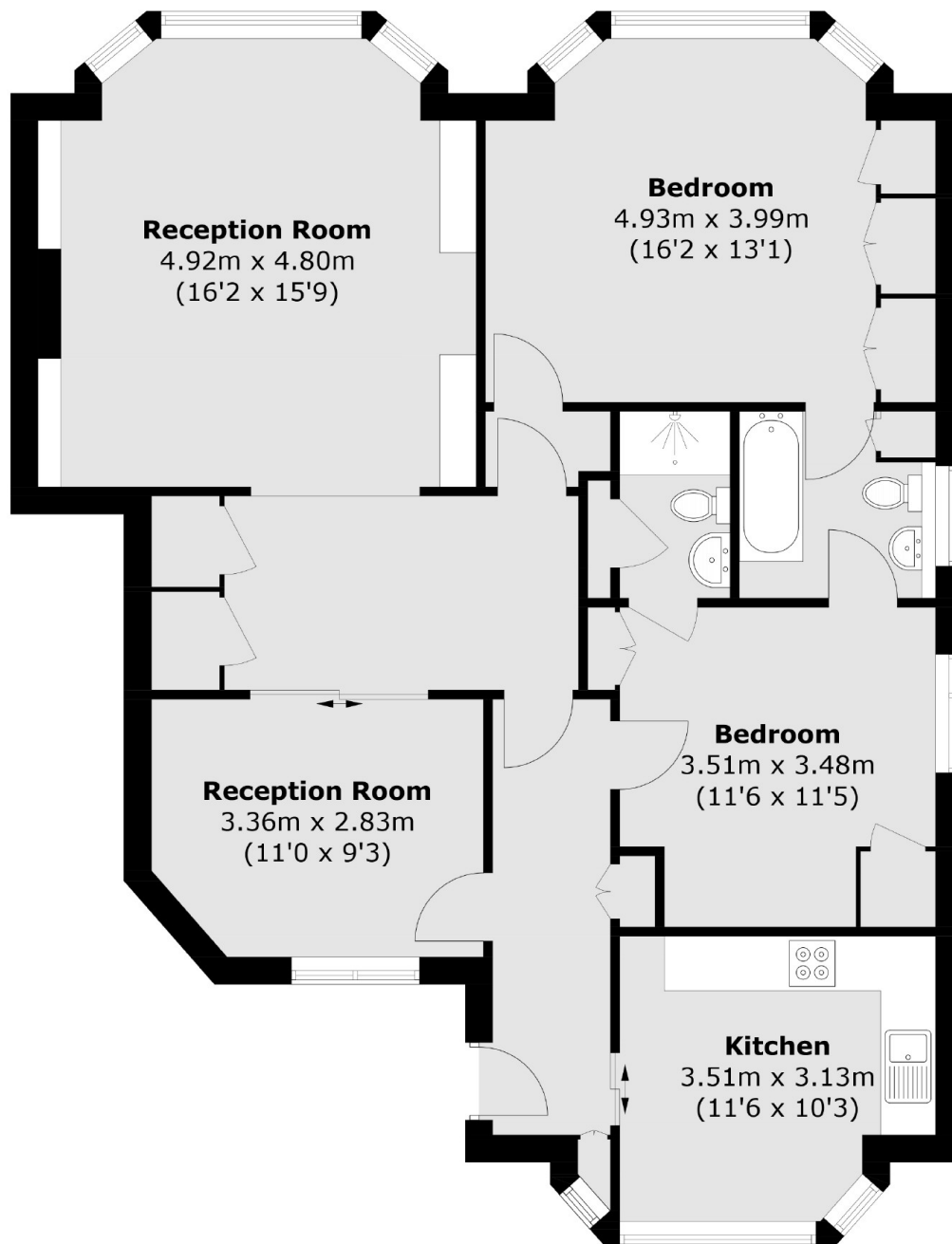
For the first time in decades, the chance to purchase a two bed two bath on one of the most desirable roads in Hampstead. The property has a separate kitchen, high ceilings and very good storage through out. It has a share of the freehold, comes with off street parking and is being sold chain free.

An attractive tree lined road providing easy access to Hampstead Village and Hampstead tube (Northern Line) is within walking distance of approximately 0.5 mile. The beautiful green open spaces of Hampstead Heath are 0.9 miles away.

Features

- Two Bedrooms
- Two Bathrooms
- Share Of Freehold
- Private Entrance
- Off Street Parking
- Chain Free

Chesterford Gardens, London, NW3



Total area (approx.): 101.4 sq. m (1,091.5 sq. ft)