

South Hill Park, NW3 £2,400 Per week

A two bedroom flat on the first floor of this charming period building with high ceilings, wood floors throughout and original features. This flat is ideal for professional tenants.

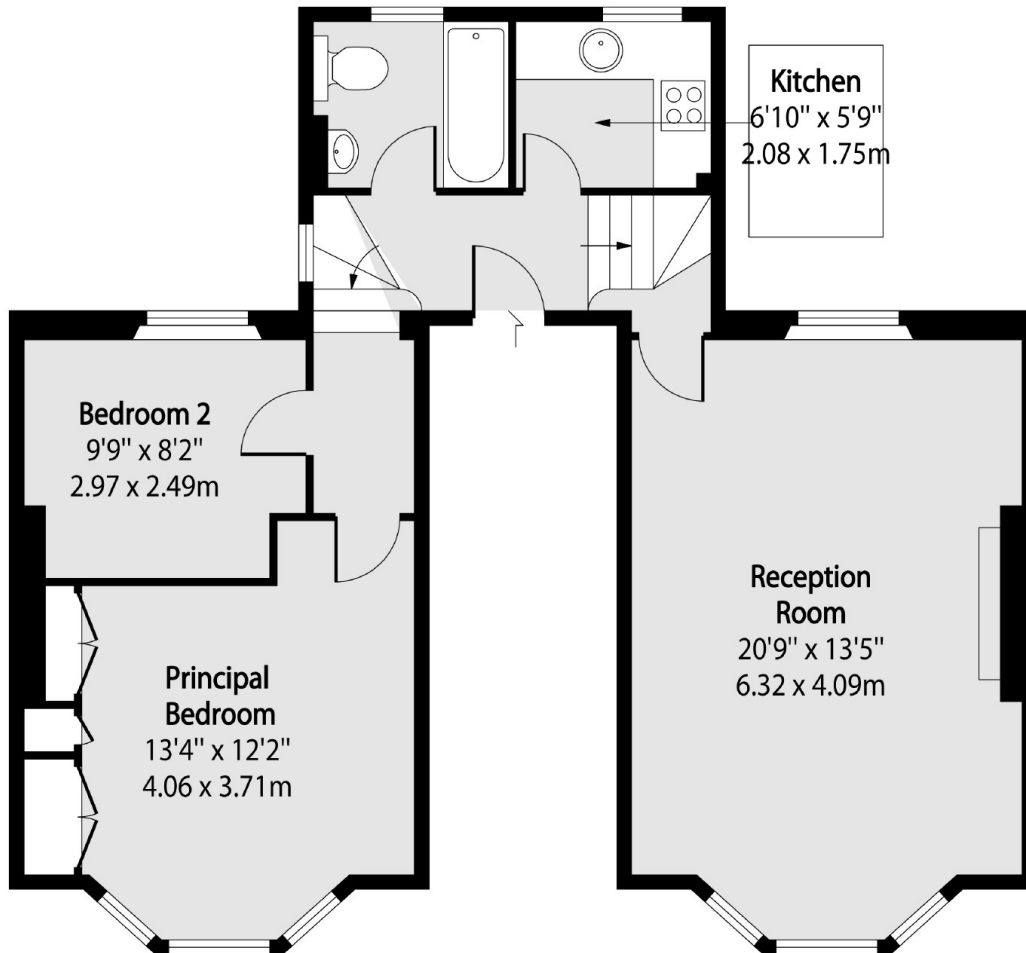
South Hill Park is quietly situated moments from the heath and offers easy access to Hampstead Heath Overground station and the shopping and restaurant facilities of South End Green including Marks and Spencer Food Hall.

Features

- First Floor
- Wood Floors Throughout
- Two Bedrooms
- High Ceilings
- Separate Kitchen
- Original Features

South Hill Park,
London, NW3

First Floor



Total area (approx): 63.73 sq m (686 sq. ft)