



Thurlow Road, NW3
£6,000,000

Dexters



Thurlow Road, NW3

A unique opportunity to buy a semi-detached freehold home for the first time in 50 years.

The raised ground floor has a spacious reception room and an impressive drawing room at the back with high ceilings overlooking the garden. There is another entrance, if needed, to the lower floor which has the kitchen, a dining room and garden sitting room with doors opening to the garden and a substantial utility room as well as a workshop.

The upper two floors have six bedrooms with period features including original fireplaces. There are two family bathrooms as well as two separate toilets.

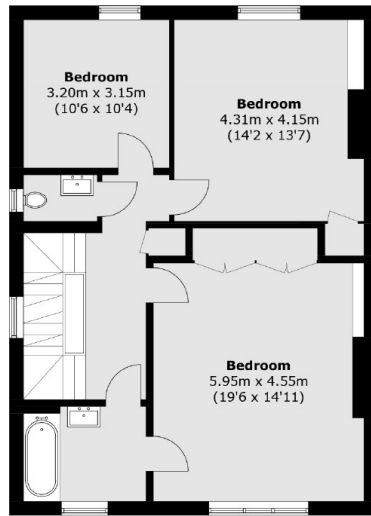
Thurlow Road is a delightful, quiet, wide, tree-lined road, equidistant between Hampstead and Belsize Park Underground Stations (Northern Line), both approximately 600m away. The property is around the corner from Rosslyn Hill with its various boutiques and cafes and the further amenities of Hampstead and Belsize Village, with Hampstead Heath and the Royal Free close by.

Features

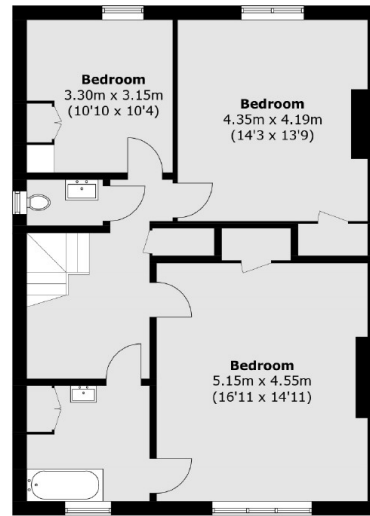
- Six Bedrooms
- Semi Detached House
- Freehold
- Private Garden
- Period Features
- Excellent Location



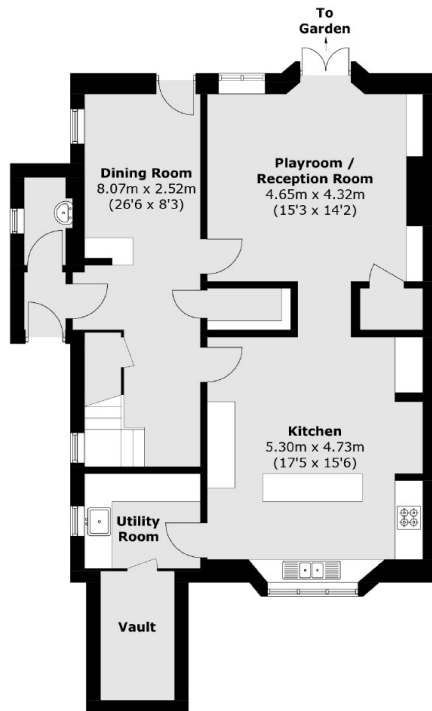
Thurlow Road, London, NW3



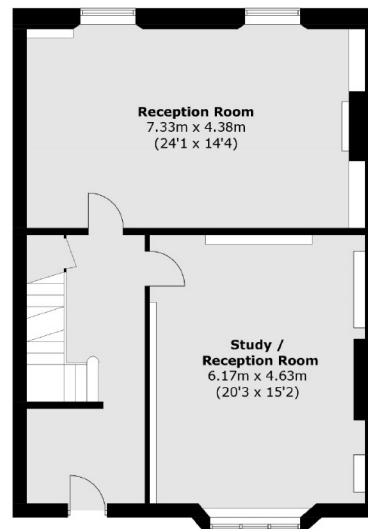
First Floor



Second Floor



Lower Ground Floor



Ground Floor

Total area (approx.): 313.5 sq. m (3,374.6 sq. ft)