



Finchley Road, NW3

£2,000,000

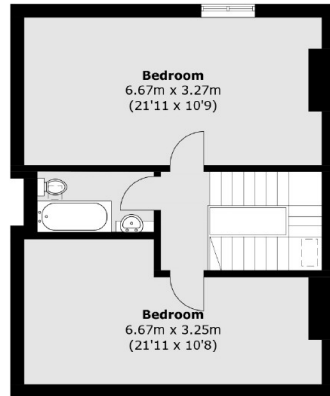
At approximately 2600 square feet is this fantastic family home. The property has six bedrooms, three bathrooms and has an enormous private garden. The freehold house has almost 1000 square feet of additional space in the basement, comes with off-street parking and is being sold chain free.

The apartment is well-placed for the amenities in Hampstead, Golders Green and Hendon with excellent local bus links on Finchley Road. Hampstead Heath is also walking distance.

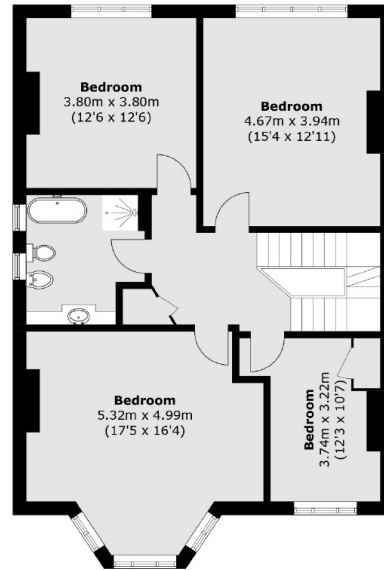
Features

- Six Bedrooms
- Freehold House
- Chain Free
- Large garden
- Off Street Parking
- High Ceilings

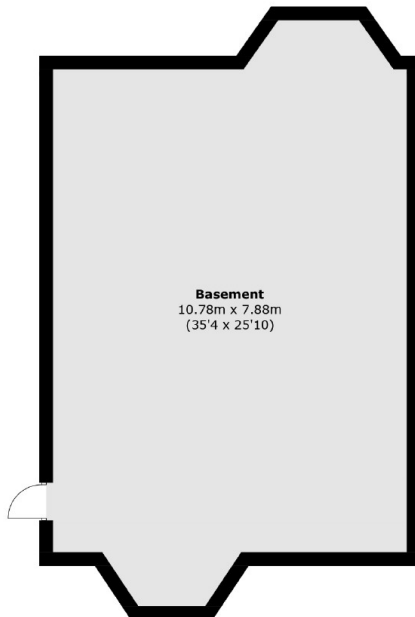
Finchley Road, London, NW3



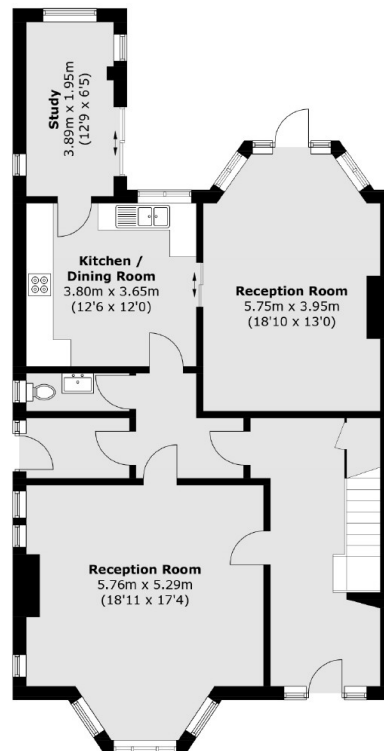
Second Floor



First Floor



Basement



Ground Floor

Total area (approx.): 241.5 sq. m (2,599.4 sq. ft)
Basement : 91.0 sq. m (979.5 sq. ft)