



Parliament Hill, NW3

£2,000,000

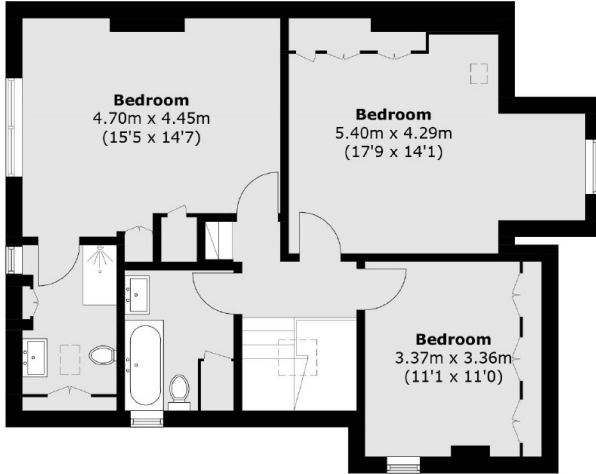
Forming the upper floors of this Victorian house is this stunning three bedroom duplex apartment. The property has a 33' reception / dining room which has lots of natural light, a separate modern kitchen and fantastic roof terrace with incredible views of London.

Parliament Hill is a quiet residential street moments from Hampstead Heath and amenities of South End Green. Belsize Park, Hampstead Village and Hampstead Heath Overground Station are in close proximity. Belsize Park (Northern Line) tube station is approximately 13 minutes away.

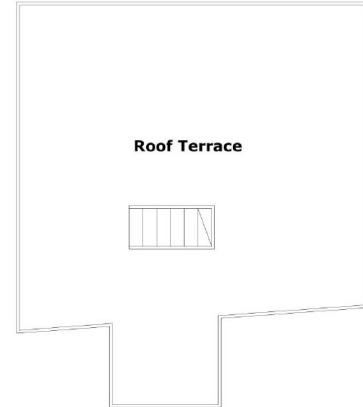
Features

- Three Bedrooms
- Chain Free
- Share of Freehold
- Large Roof Terrace
- Excellent Condition
- Top Floor Duplex

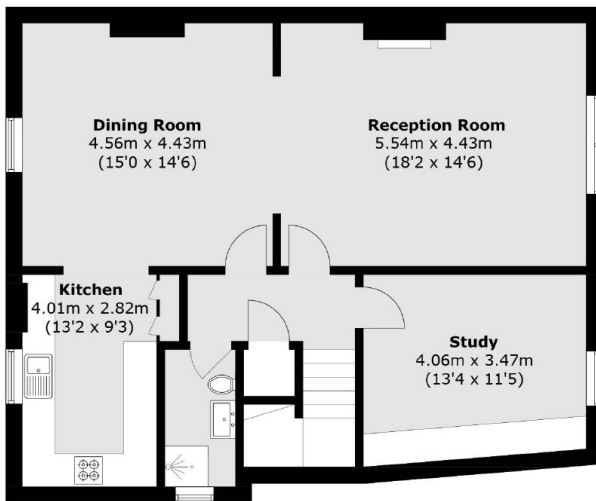
Parliament Hill, London, NW3



Third Floor



Terrace



Second Floor

Total area (approx.): 150.4 sq. m (1618.8 sq. ft)
Roof Terrace area (approx.): 38.9 sq. m (418.7 sq. ft)