



Arkwright Road, NW3

£1,038 Per week

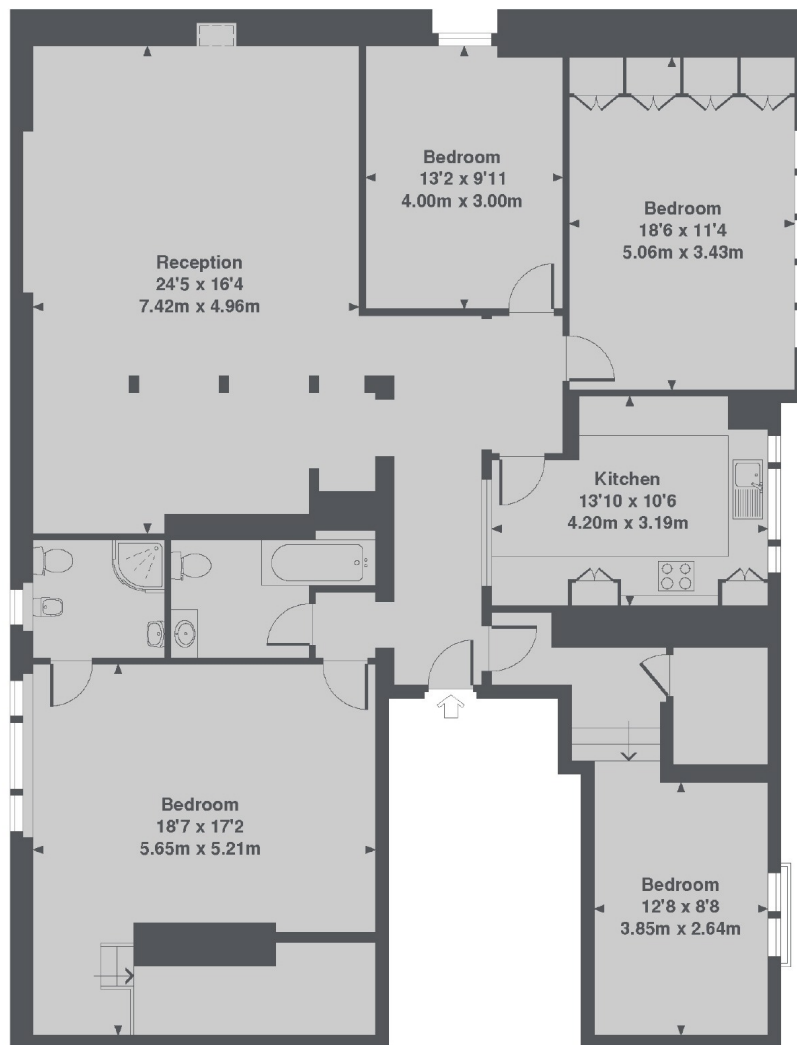
A bright and spacious four bedroom apartment occupying the top floor of this house. There's a South facing terrace with beautiful views overlooking the communal garden and the lights of London.

One might fancy a bite to eat at one of the huge selection of restaurants in Hampstead before strolling down to the O2 Centre on Finchley Road to catch the latest movie.

Features

- Four Bedrooms
- Two Bathrooms
- South Facing Terrace
- Separate Kitchen
- Large Reception
- Wood Floors

Arkwright Road, London, NW3



3rd floor

Arkwright Road, NW3

Total Approx. Floor area 1647 Sq. Ft. (153.0 Sq. M.)

Contact

To arrange a viewing call our office on the number below or visit our website.



Energy Rating: E. We aim to make our particulars both accurate and reliable. However they are not guaranteed; nor do they form part of an offer or contract. If you require clarification on any points then please contact us, especially if you're traveling some distance to view. Please note that appliances and heating systems have not been tested and therefore no warranties can be given as to their good working order.