



## Pattison Road, NW2

£6,500 Per calendar month

A four bedroom semi detached house that has just had a new rear extension. The house is arranged over three floors, has a south facing garden and off street parking for two cars.

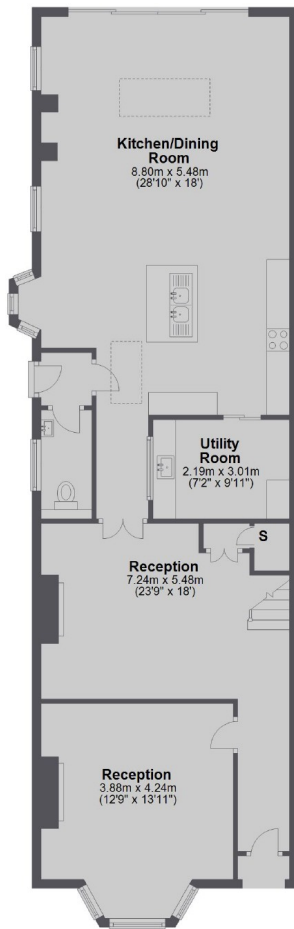
Located on this pretty tree lined street on the Hampstead borders with Hampstead Heath about half a mile away. The house offers great travel access for commuters with the A41, A406 and M1 close by.

### Features

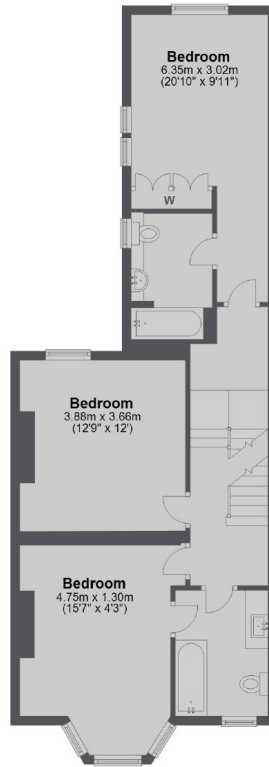
- Four Bedrooms
- Double Reception
- Kitchen Breakfast Room
- Three Bathrooms
- South Facing Garden
- Off Street Parking

# Pattison Road, London, NW2

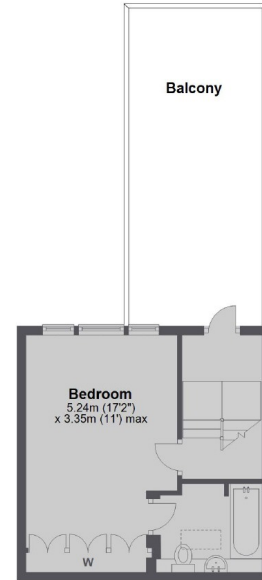
Ground Floor



First Floor



Second Floor



Total area: approx. 200.2 sq. metres (2154.9 sq. feet)