



Gayton Road, NW3

£3,200,000

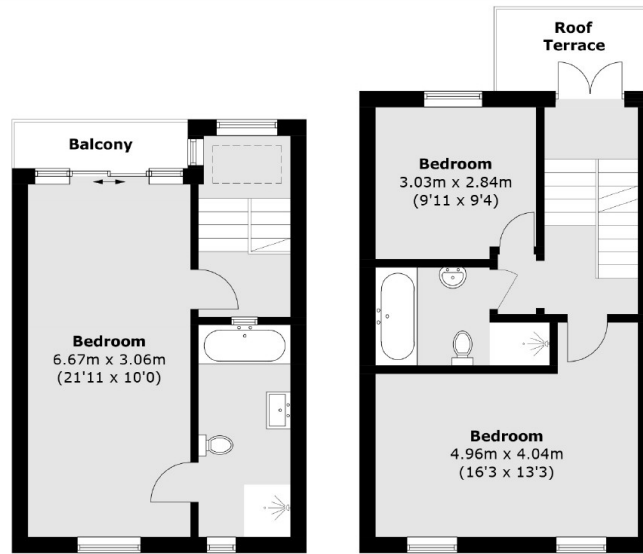
A stunning five bedroom family home with period features including feature fireplaces and high ceilings. The property offers a lot of natural light, has two terraces that have fantastic views of London as well as a private patio garden.

Located in the heart of Hampstead village, this house is walking distance to the fashionable shops, restaurants and cafes of Hampstead High Street as well as the green open spaces of Hampstead Heath. For transport Hampstead Underground Station (Northern Line) and Hampstead Heath over ground are in close proximity.

Features

- Family House
- Hampstead Village
- Chain Free
- Five Bedrooms
- Patio Garden
- Two Terraces

Gayton Road, London, NW3



Third Floor

Second Floor



Lower Ground Floor

Upper Ground Floor

First Floor

Total area (approx.): 204.1 sq. m (2,196.9 sq. ft)
Balcony & Roof Terrace (approx.): 7.4 sq. m (79.6 sq. ft)