



## Heath Close, NW11

£800,000

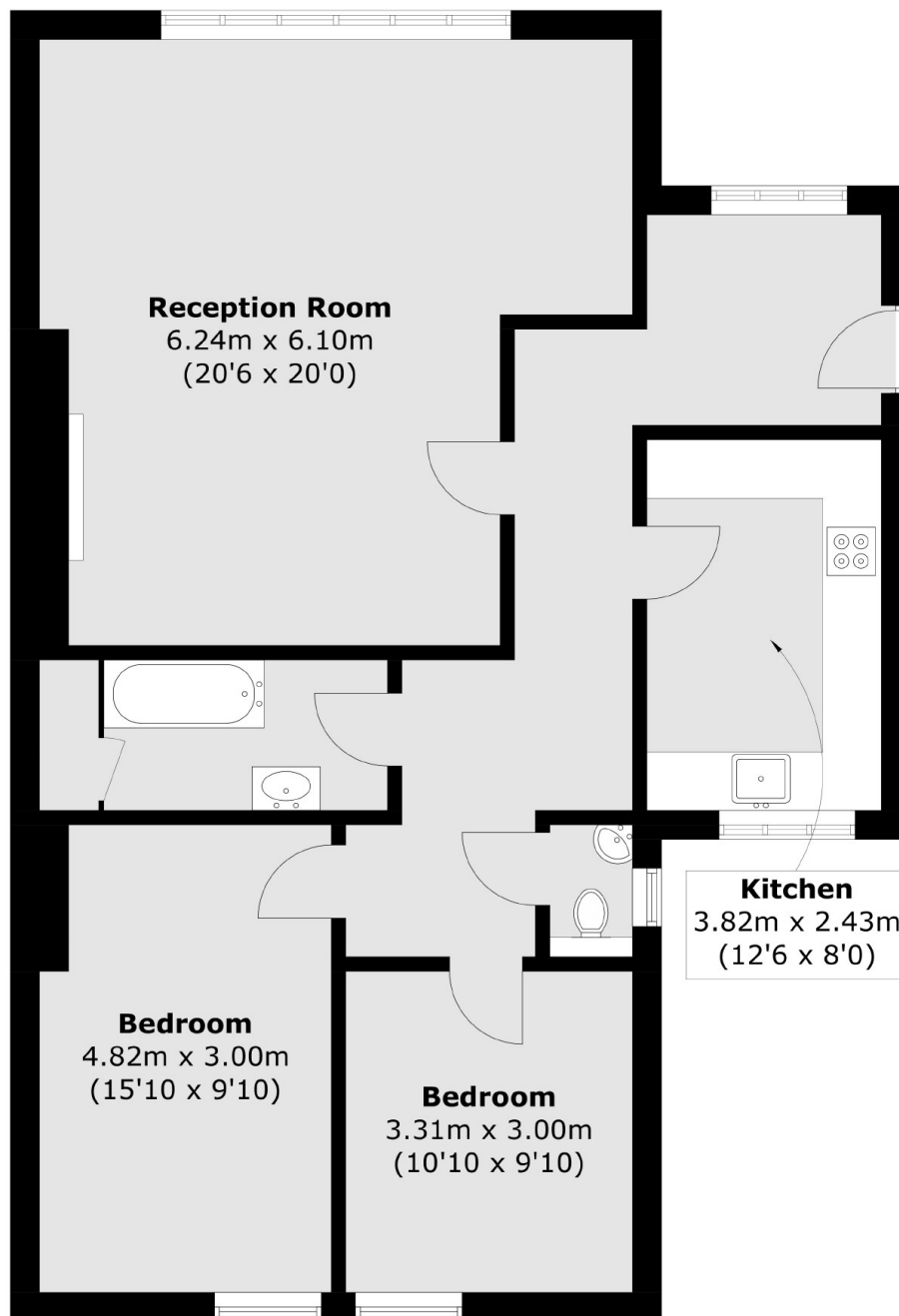
Beautifully presented and well proportioned (1,019 sq ft) two bedroom apartment on the first floor of this charming Arts and Crafts listed building designed in 1909 by the renowned architect, M.H. Baillie Scott, benefiting from a large 20'6 x 20' reception and delightful communal gardens.

Waterlow Court is quietly situated next to Hampstead Heath Extension, and within walking distance of Golders Green Station providing access to the City and Central London on the Northern Line.

### Features

- Large Reception
- Two Double Bedrooms
- Charming Historic Development
- Communal Gardens
- Private Street Parking
- Chain Free

# Heath Close, London, NW11



Total area (approx.): 94.7 sq. m (1019.3 sq. ft)