

## Hampstead Way, NW11

£1,625,000

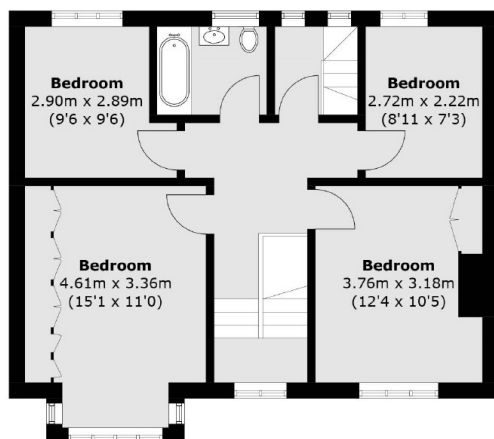
A beautiful five bedroom double fronted family home located off the Hampstead Way. The ground floor has a 22' living room and a separate kitchen/dining room looking out onto a stunning private garden. The property has lovely wood flooring, a feature fireplace and has five bedrooms upstairs one of which would be best suited as an office.

The property is set back from the road in the beautiful Lucas Square and very conveniently located being a short walk from Big Wood and Temple Fortune's shops, cafes, restaurants and transport facilities and 0.9 miles from Golders Green Underground.

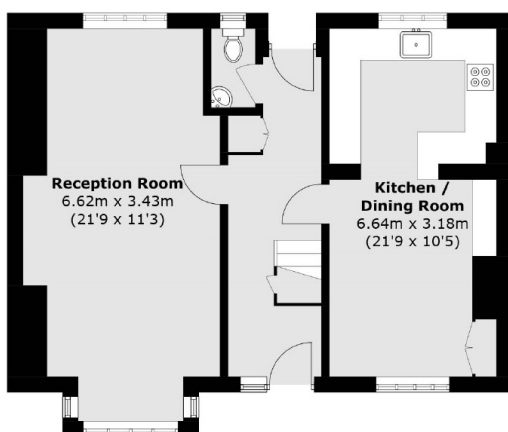
### Features

- Five Bedrooms
- Chain Free
- Freehold
- Private Garden
- Two Bathrooms
- Office Room

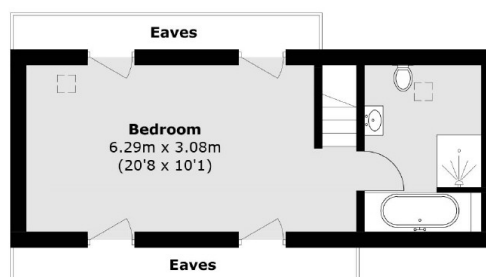
# Hampstead Way, London, NW11



**First Floor**



**Ground Floor**



**Second Floor**

Total area (approx.): 148.0 sq. m (1,593.1 sq. ft)  
(Excluding Eaves)