



Erskine Hill, NW11

£1,100,000

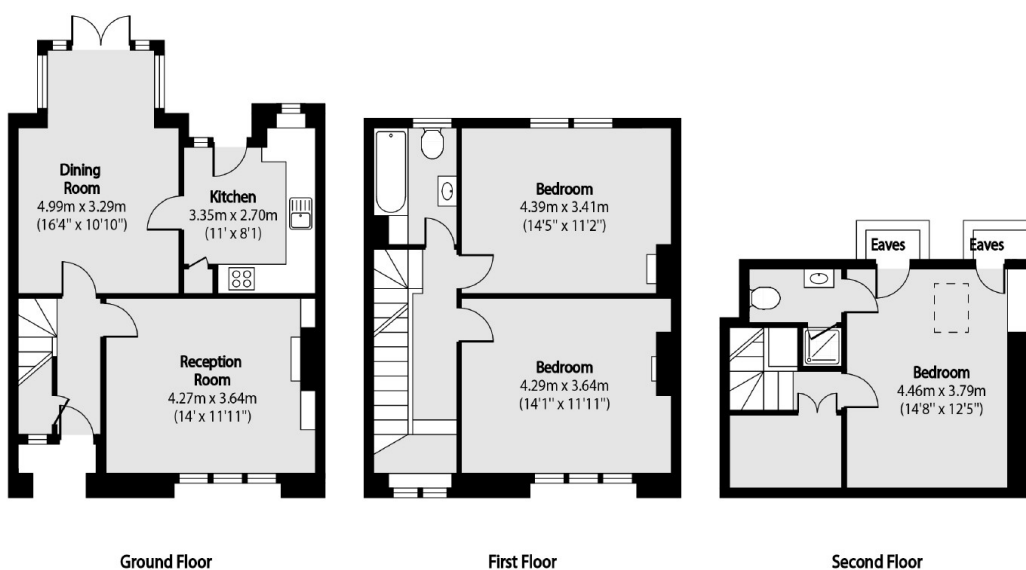
In the heart of Hampstead Gardens Suburb is this three storey freehold family home. The property has a separate kitchen, spacious living room with lovely wood flooring and direct access to a stunning private garden.

Located 0.9 miles from Golders Green Underground station, within close proximity to the Garden Suburb School and 0.2 miles from the various shops, cafes and restaurants in Temple Fortune.

Features

- Three Bedrooms
- Freehold
- Approximately 1,225 Sq.Ft
- Stunning Garden
- Separate Kitchen
- Two Bathrooms

Erskine Hill, London, NW11



Total area (approx): 113.67 sq m (1224 sq. ft)