



Haverstock Hill, NW3

£350,000

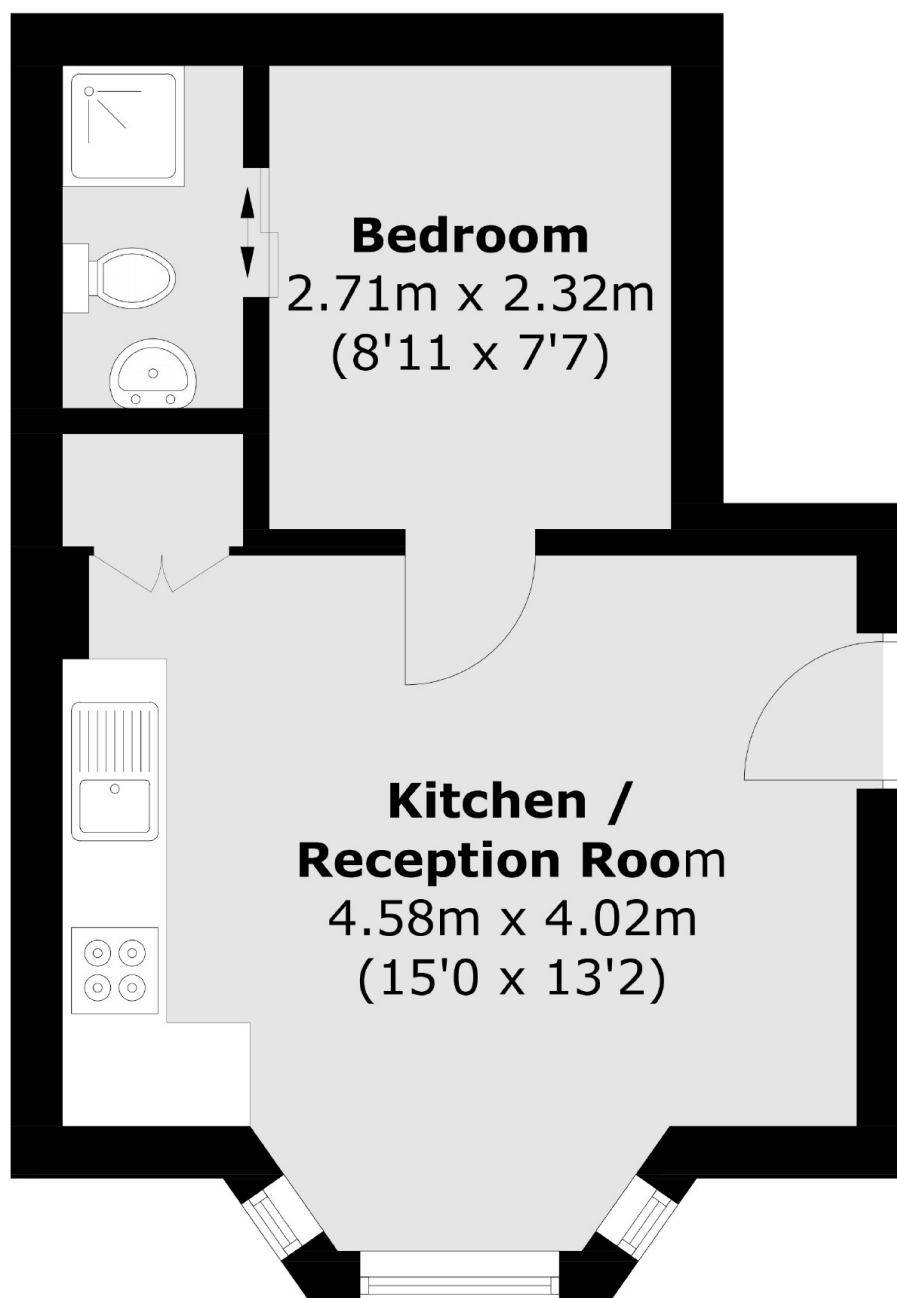
A studio apartment spanning approximately 290 square feet that is being sold chain free. The property has high ceilings and large windows that let in lots of natural light.

The property is ideally located within moments of the eclectic shops, cafes and restaurants of Belsize Park, the property is also within easy reach of both Hampstead Heath & Primrose Hill and benefits from the connectivity afforded by Belsize Park Underground Station (Northern Line) and Swiss Cottage Underground Station (Jubilee Line).

Features

- Studio Apartment
- Chain Free
- Wood Flooring
- Great Transport Links
- Approximately 290 Sq.Ft
- Long Lease

Haverstock Hill, London, NW3



Total area (approx.): 26.6 sq. m (286.3 sq. ft)