



Finchley Road, NW3 £750,000

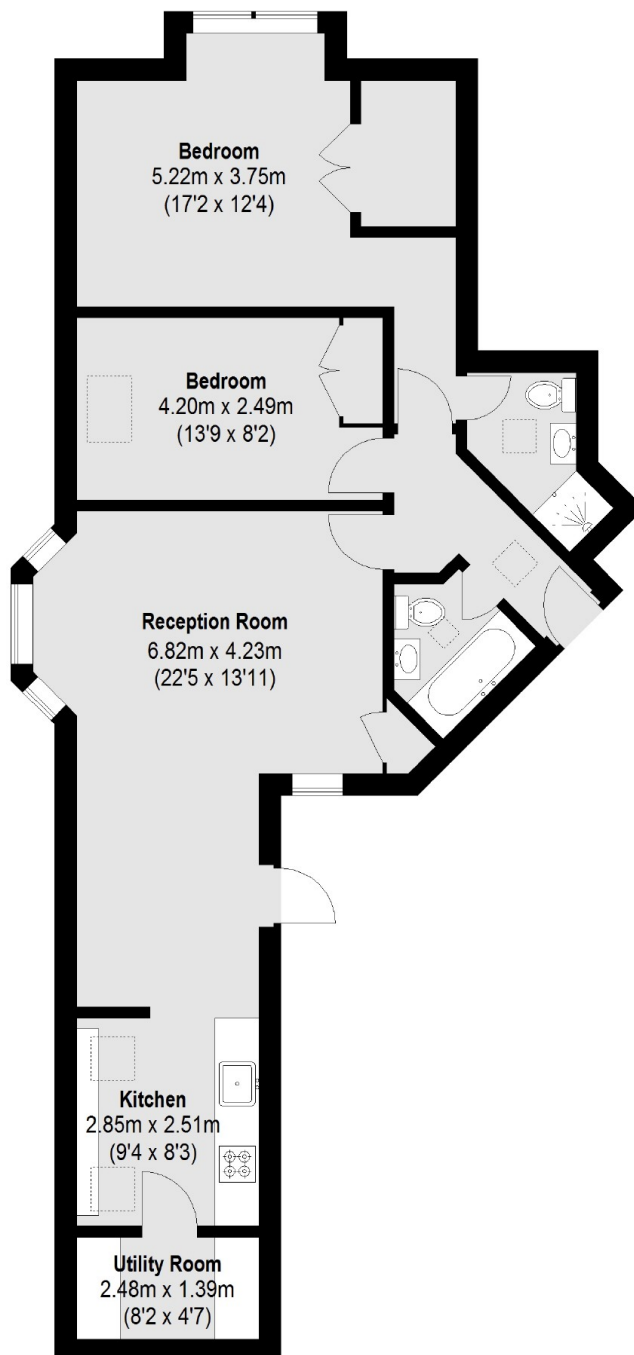
A superb two bedroom apartment set on the fourth floor of this particularly well regarded mansion block with the benefit of a lift and communal gardens.

The flat is located close to the multiple transport facilities along Finchley Road including Finchley Road underground station (Jubilee and Metropolitan lines).

Features

- Reception Room
- Kitchen
- Two Bedrooms
- Two Bathrooms
- Utility Room
- Communal Gardens

Finchley Road,
London, NW3



Fourth Floor

Total area (approx.): 78.19 sq. m (842 Sq. ft)