

Fitzjohns Avenue, NW3

£525 Per week

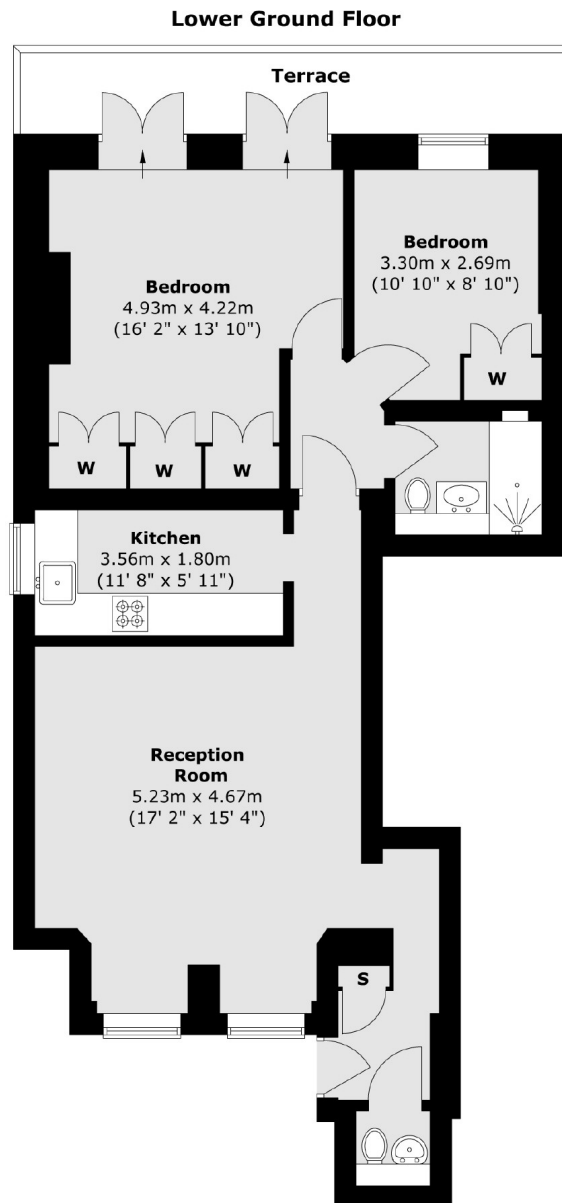
Newly refurbished two double bedroom flat with access onto a private terrace. Large reception room, separate kitchen with integrated appliances and modern shower room. Both bedrooms have fitted storage space. Additional WC. Communal garden.

The flat is located a short walk from Hampstead High Street, Swiss Cottage and Belsize Park stations.

Features

Two Double Bedrooms
Large Reception Room
Private Entrance
Separate Kitchen
Terrace
Communal Gardens

Fitzjohns Avenue, London, NW3



Total area (approx.) : 74.8 sq. m (805 sq. ft)
Total terrace area (approx.) : 9.1 sq. m (98 sq. ft)

Contact

To arrange a viewing call our office on the number below or visit our website.



Energy Rating: C. We aim to make our particulars both accurate and reliable. However they are not guaranteed; nor do they form part of an offer or contract. If you require clarification on any points then please contact us, especially if you're traveling some distance to view. Please note that appliances and heating systems have not been tested and therefore no warranties can be given as to their good working order.