



Kidderpore Avenue, NW3 £1,500,000

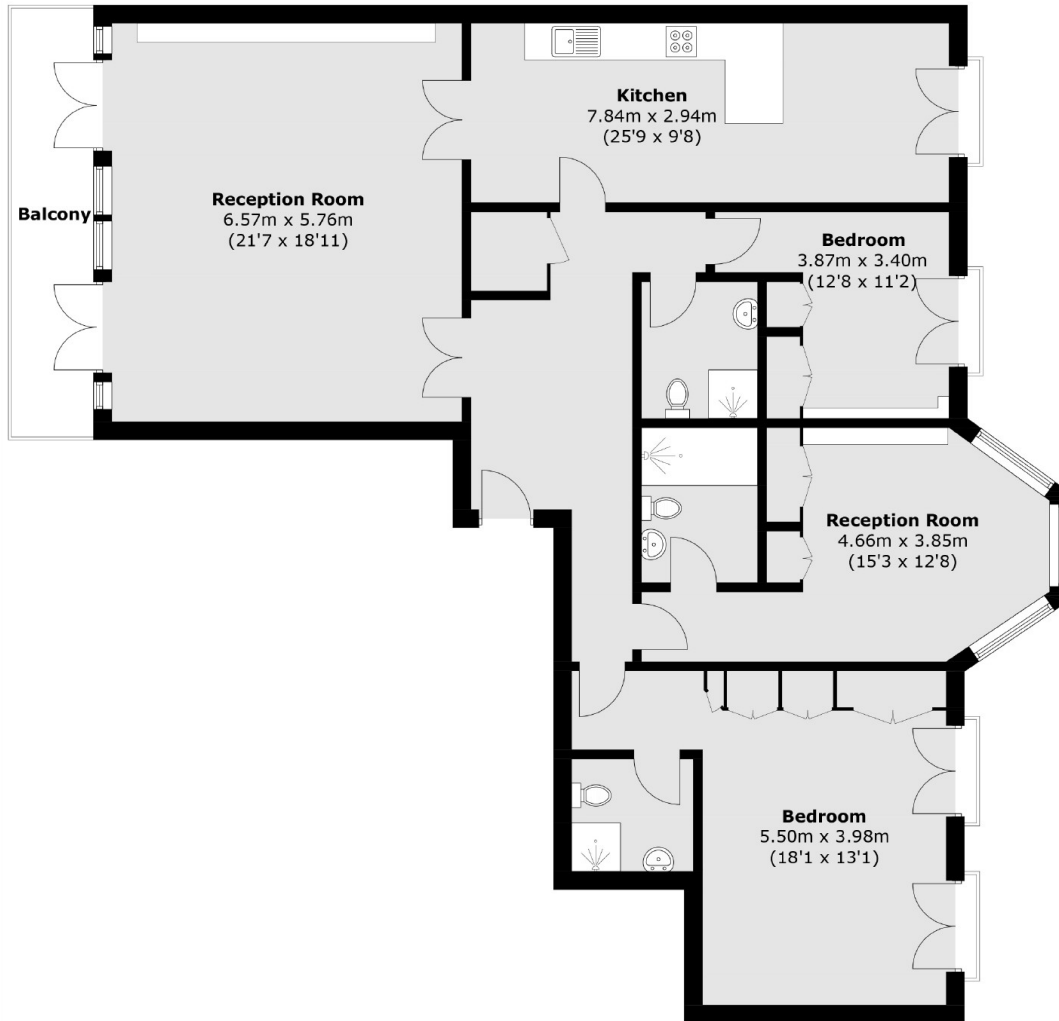
Well proportioned and beautifully presented three bedroom first floor luxury apartment. This fabulous property benefits from three bathrooms, a large balcony overlooking delightful communal gardens, concierge, resident gym and swimming pool and two secure underground parking spaces.

This highly sought after and prestigious development is located within easy access of Hampstead tube station with Northern line services to the centre of London. Finchley Road & Finchley Road and Frognal stations are also accessible offering Metropolitan, Jubilee Line & Thameslink services.

Features

- Prestigious Development
- Concierge
- Swimming Pool
- Gym
- Communal Gardens
- Two Parking Spaces

Kidderpore Avenue, London, NW3



Total area (approx.): 152.8 sq. m (1,644.7 sq. ft)
Balcony: 9.5 sq. m (102.2 sq. ft)