



## Addison Way, NW11

£300,000

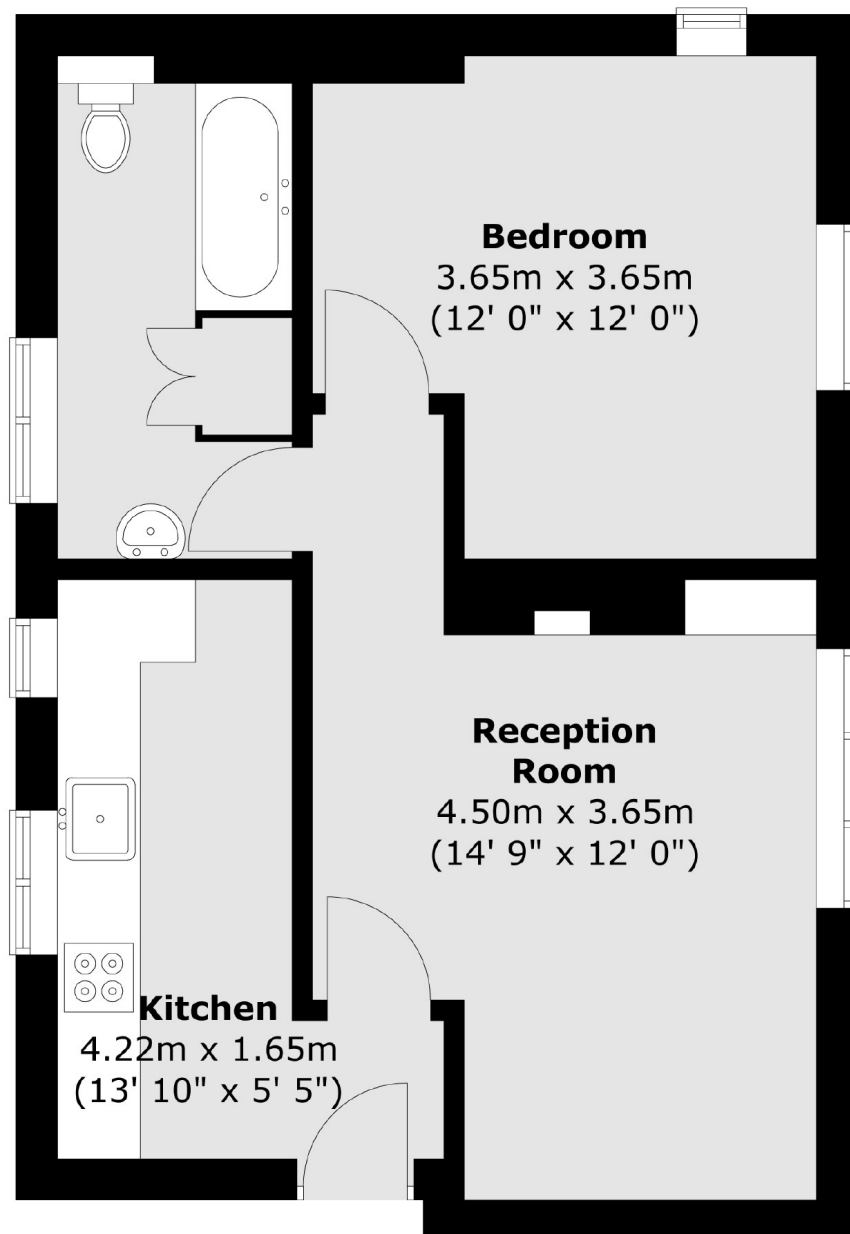
A spacious one double bedroom apartment with a separate kitchen. The property is approximately 485 square feet with well proportioned rooms, offers a lot of natural light and has great storage in an easily accessible loft. There is a beautiful garden demised to the flat at the rear.

Hampstead Garden Suburb is very close to the local amenities of Temple Fortune shops, cafes and schools. The nearby Hampstead Heath offers acres of green space for outdoor activities, while the bustling amenities of Golders Green and Finchley are also close by.

### Features

- One Double Bedroom
- Chain Free
- Separate Kitchen
- Outside Space
- Long Lease
- Approximately 485 Sq.Ft

# Addison Way, London, NW11



Total area (approx.) : 44.9 sq. m (483 sq. ft)