

Chandos Way, NW11

£470,000

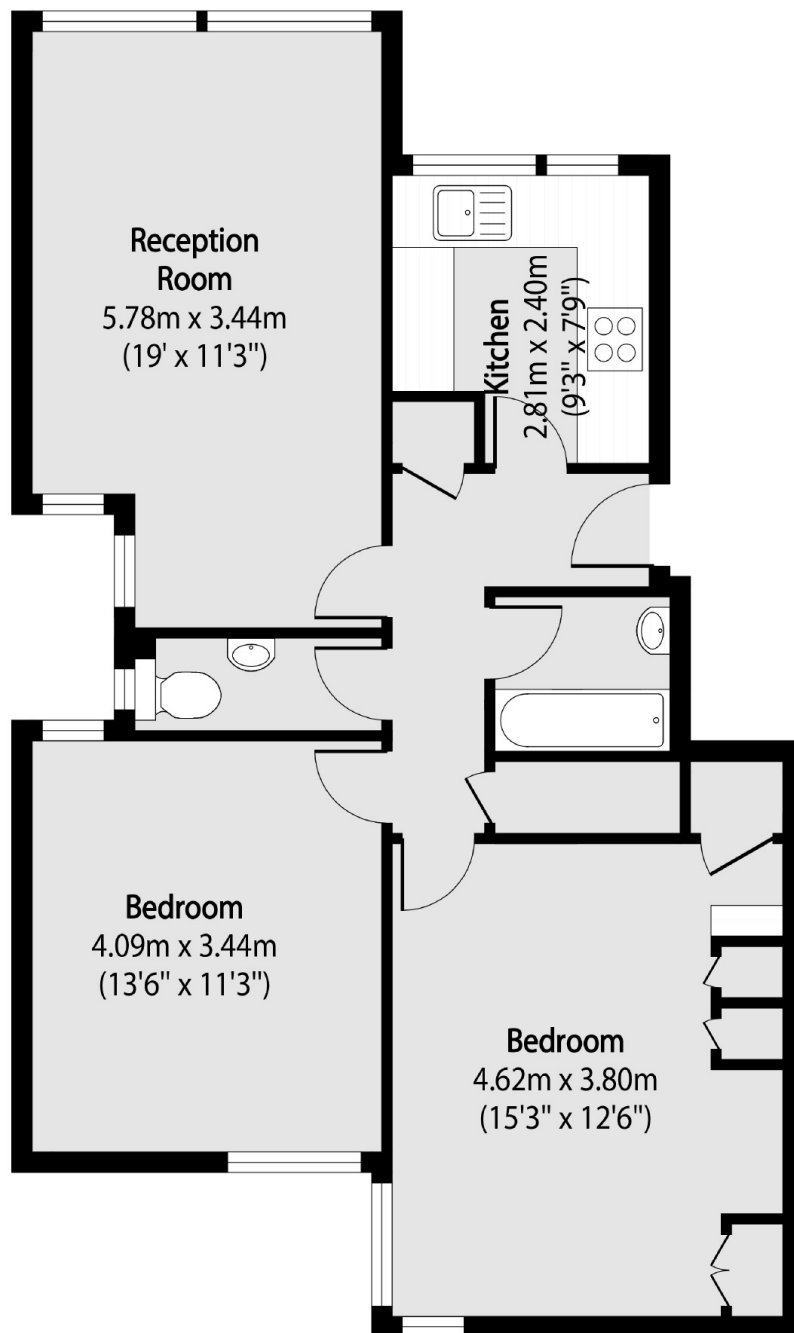
A bright and excellently presented two double bedroom apartment on the first floor of this popular block which gives access to a communal garden and an allocated parking space.

Chandos Way is a private development in Golders Green between the High Road and Hampstead Heath. The famous 'Old Bull & Bush' gastro pub is a short distance around the corner.

Features

- Two Double Bedrooms
- Allocated Parking
- Separate Kitchen
- Storage Cupboard
- Dual Aspect Windows
- Great Location

Chandos Way, London, NW11



Total area (approx): 70.70 sq m (761 sq. ft)