



Fitzjohns Avenue, NW3

£5,898 Per calendar month

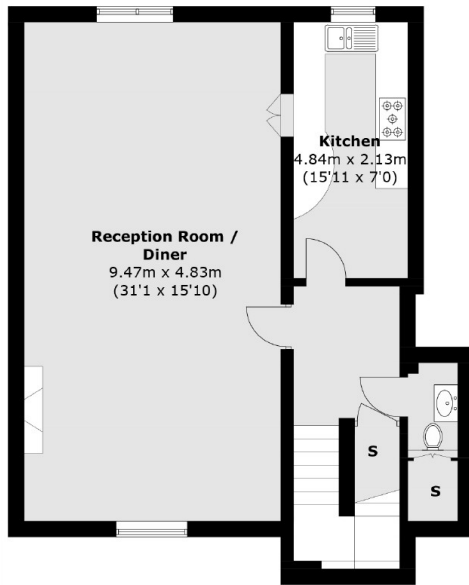
Top floor split level three double bedroom flat with a large roof terrace and access to a communal garden with a swimming pool. Double reception room with wooden flooring, separate kitchen and WC/ Three double bedrooms and two bathrooms (one ensuite)

The flat is located a short walk to Swiss Cottage tube station giving you quick access to the City and Central London on the Jubilee Line.

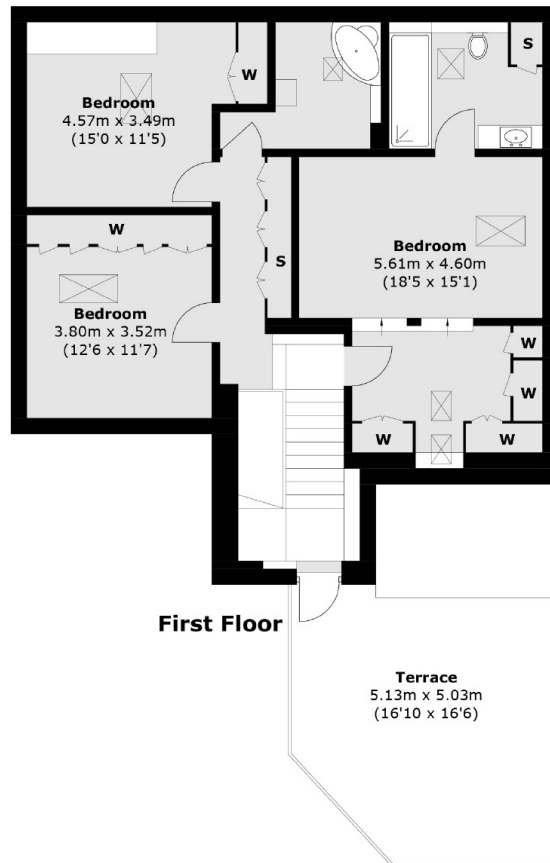
Features

- Three Double Bedrooms
- Large Reception Room
- Separate Kitchen
- Two Bathrooms
- Swimming Pool
- Good Transport Links

Fitzjohns Avenue, London, NW3



Ground Floor



First Floor

Total area (approx.): 156 sq. m (1,679.1 sq. ft)
Terrace (approx.): 30.9 sq. m (332.6 sq. ft)