



Studholme Court, NW3

£525,000

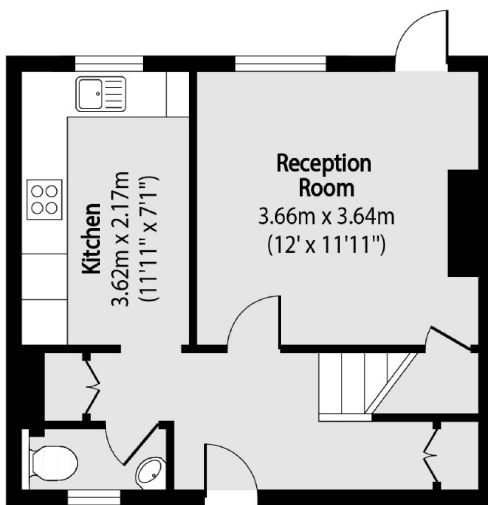
Split level two double bedroom apartment with a private entrance. The property has a separate kitchen, is being sold chain free and has a private garden.

Conveniently located walking distance to West End Lane's many shops, bars, supermarket and cafes as well as excellent transport links including West Hampstead Tube (Jubilee Line), West Hampstead Thameslink, Finchley and Frognal Overground and local bus links.

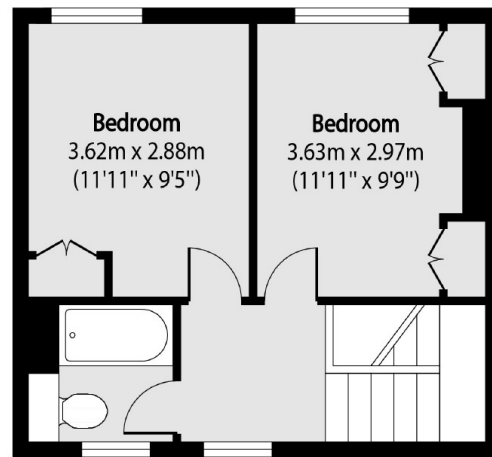
Features

- Two Double Bedrooms
- Split Level
- Private Entrance
- Private Garden
- Chain Free
- Approximately 715 Sq.Ft

Studholme Court, London, NW3



Ground Floor



First Floor

Total area (approx): 66.00 sq m (710 sq. ft)