



## Kidderpore Avenue, NW3

£1,300,000

Offers in excess of £1,300,000. An attractive three bedroom apartment in a well-presented detached gated building on Kidderpore Avenue. There is a separate living room, kitchen and the property offers a private terrace. The building also has a large communal garden to the rear and there is a private space on a gated drive and a large basement storage demised to the property.

Kidderpore Avenue is a pleasant residential street and is well placed for Hampstead Heath and West Heath. There is easy access to Hampstead Village with its multiple boutique shops, cafés and restaurants as well as transport link from Hampstead Tube Station (Northern Line)

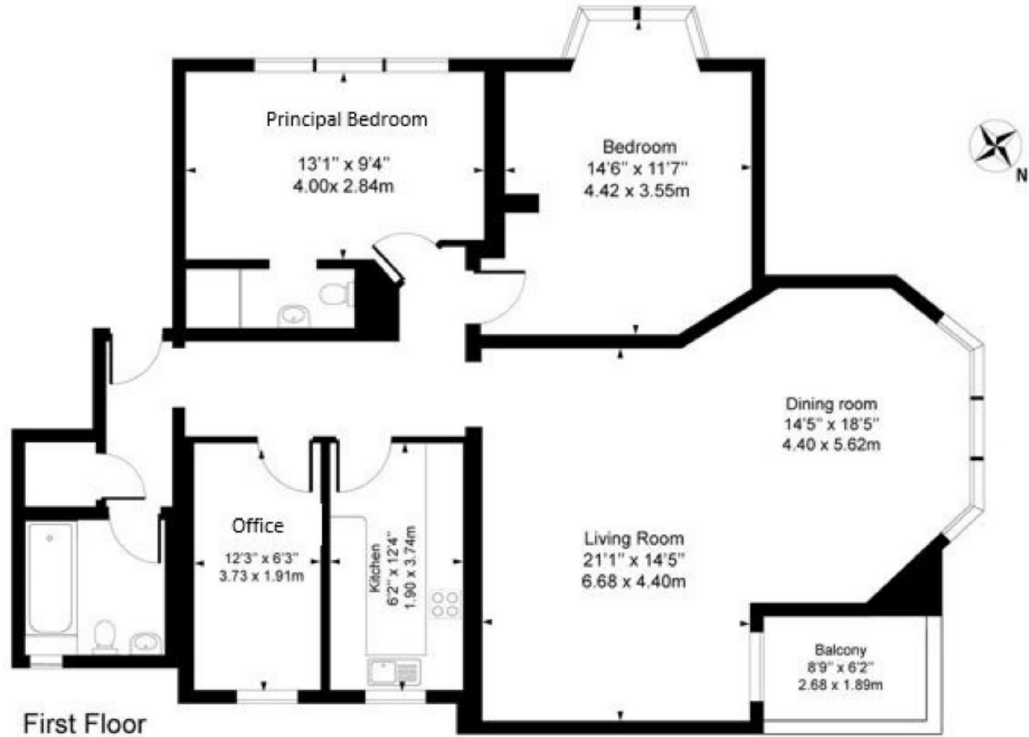
### Features

- Three Bedroom
- First Floor Apartment
- Secure Off-Street Parking
- Private Terrace
- Communal Garden
- Gated Building

# Kidderpore Avenue, London, NW3

## Kidderpore Avenue, NW3

Approx. Gross Internal Area 1184 sq ft / 110 sq m



For Illustration Purposes Only - Not To Scale

This floor plan should be used as a general outline for guidance only and does not constitute in whole or in part an offer or contract. Any intending purchaser or lessee should satisfy themselves by inspection, search, enquiries and full survey as to the correctness of each statement. Any areas measurements or distances printed here are approximate and should not be used to value a property or be the basis of any sale or let.