



## Haverstock Hill, NW3

£6,000,000

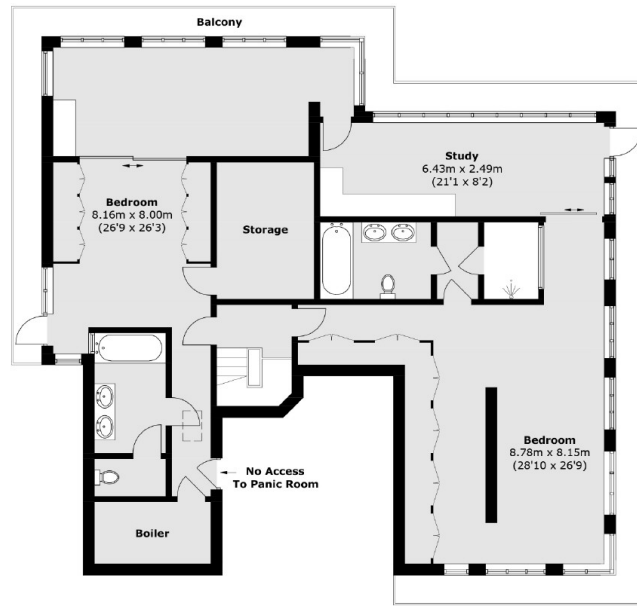
An immaculate duplex three bedroom apartment offering a stunning and modern living interior completed with an allocated parking space set within a private gated development.

The property is excellently located between Belsize Park and Chalk Farm Station (Northern Line) which allows easy access into Central London in circa 20 minutes.

### Features

- Three Bedrooms
- Wrap Around Terrace
- Split Level
- Allocated Parking
- Penthouse
- Far Reaching Views

# Haverstock Hill, London, NW3



Sixth Floor



Fifth Floor

Total area (approx.): 367.7 sq. m (3,957.8 sq. ft)  
Balcony: 49.5 sq. m (532.8 sq. ft)