



## Hampstead Way, NW11 £675,000

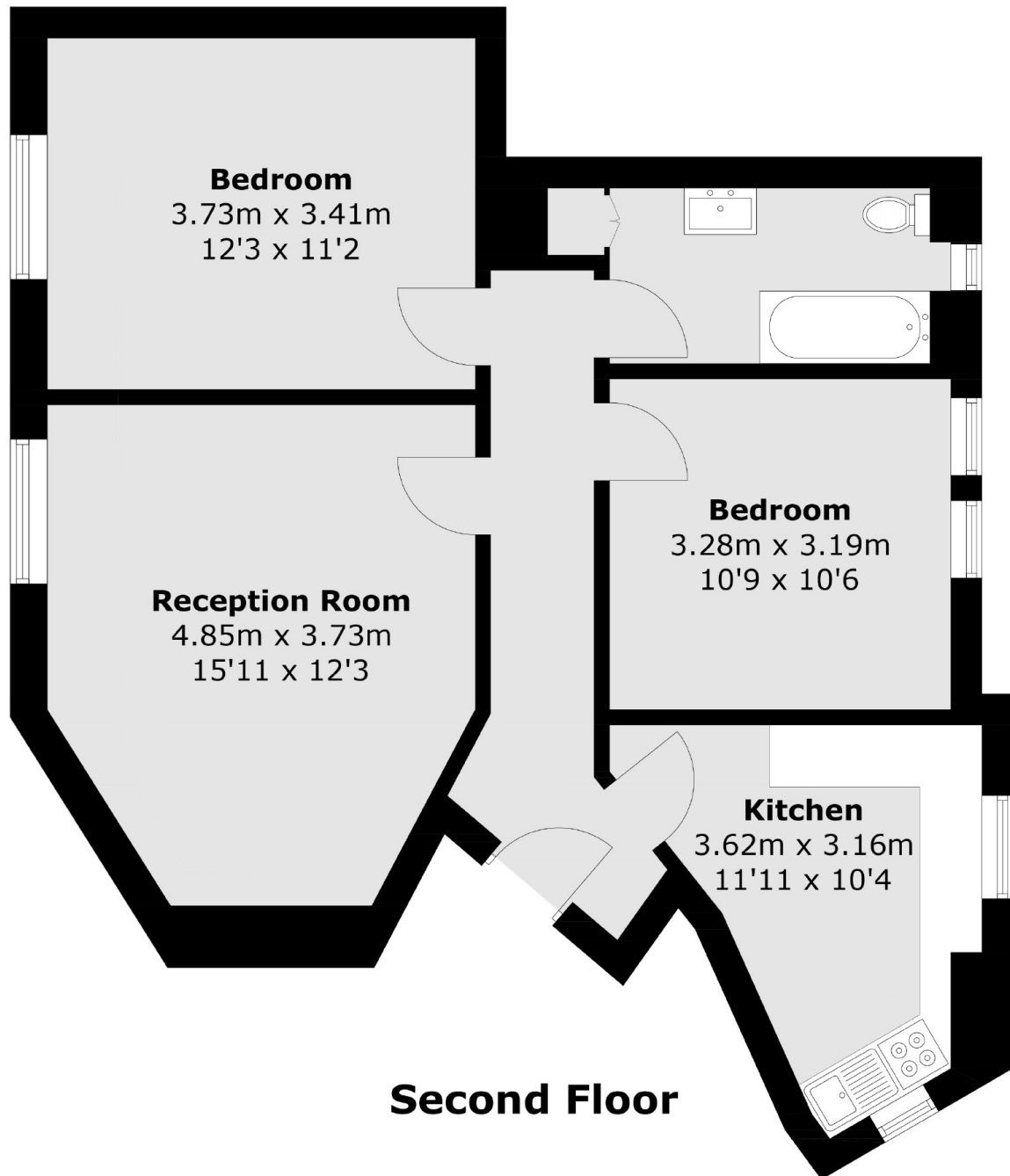
A charming newly refurbished two bedroom flat arranged around its central square. Heathcroft is a set of Grade II Listed Neo-Georgian blocks of flats on the south end of Hampstead Way just moments from Hampstead Heath.

Heathcroft is in a particularly quiet and convenient position directly opposite Hampstead Heath extension and is close to Golders Green Underground station (Northern Line).

### Features

- Reception Room
- Separate Kitchen
- Two Bedrooms
- Garage
- Courtyard Gardens
- Moments from Heath
- Extension

Hampstead Way,  
London, NW11



Total area (approx.): 65.9 sq. m (709.3 sq. ft)