



## Haverstock Hill, NW3

£1,100,000

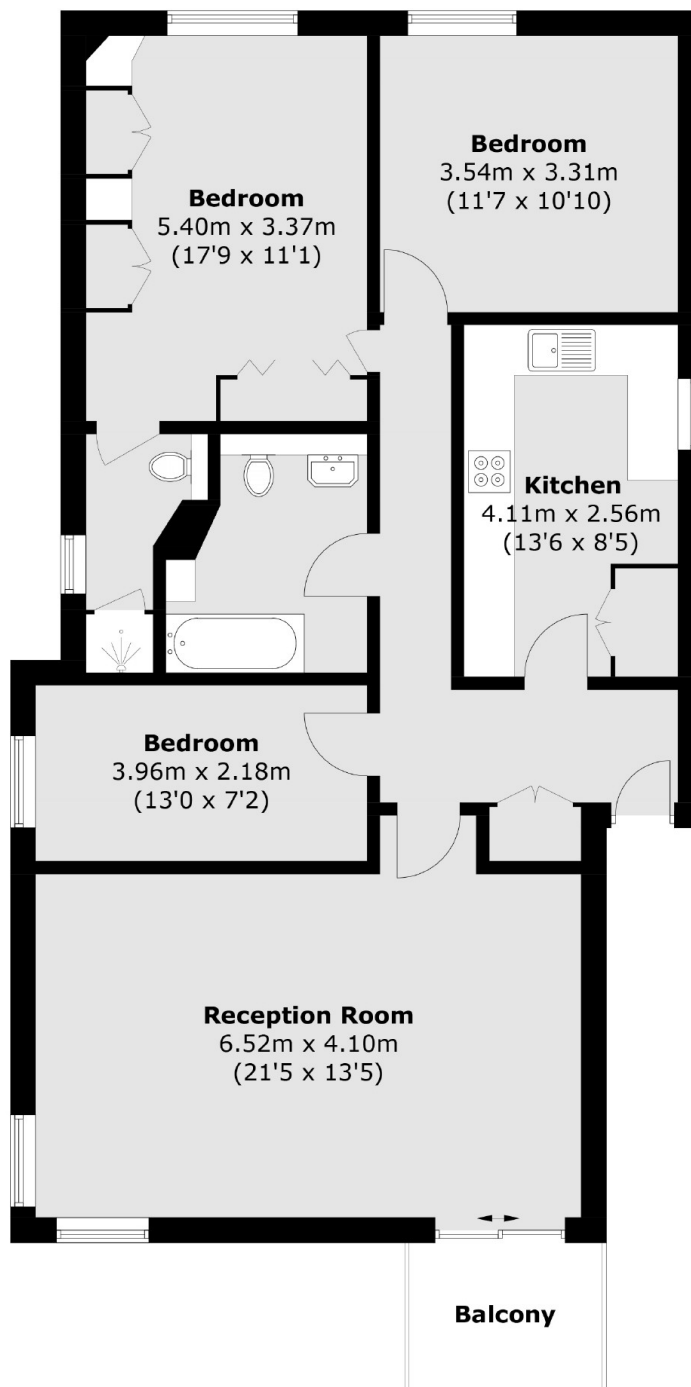
A superb and spacious three bedroom apartment located in a secure gated development which offers an allocated parking space. Haverstock Hill is set conveniently for access to local transport links and a range of shops and restaurants.

The property is excellently located between Belsize Park and Chalk Farm Station (Northern Line) which allows easy access into Central London in circa 20 minutes.

### Features

- Allocated Parking
- Gated Development
- Three bedroom
- Private Balcony
- Lift Access
- Communal Gardens

# Haverstock Hill, London, NW3



Total area (approx.): 97.9 sq. m (1,053.8 sq. ft)  
Balcony: 4.0 sq. m (43.0 sq. ft)