



Haverstock Hill, NW3

£1,250,000

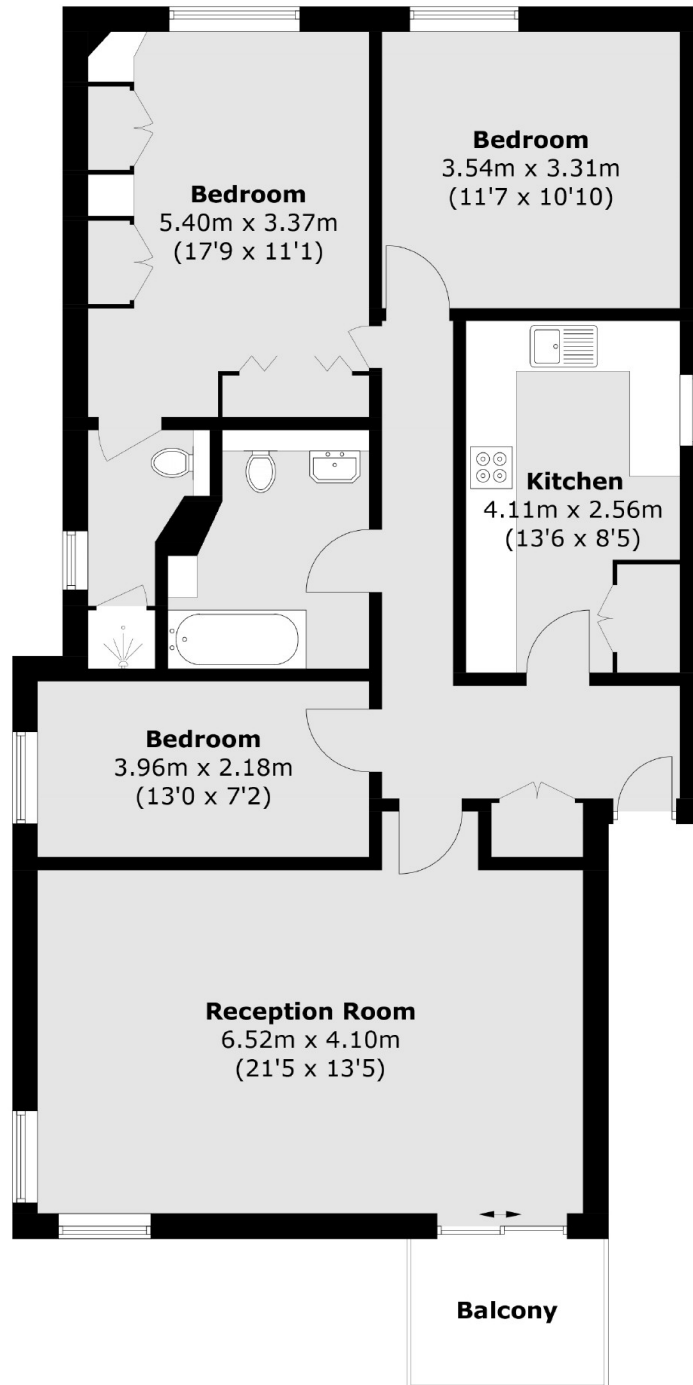
A superb and spacious three bedroom apartment located in a secure gated development which offers an allocated parking space. Haverstock Hill is set conveniently for access to local transport links and a range of shops and restaurants.

The property is excellently located between Belsize Park and Chalk Farm Station (Northern Line) which allows easy access into Central London in circa 20 minutes.

Features

- Allocated Parking
- Gated Development
- Three bedroom
- Private Balcony
- Lift Access
- Communal Gardens

Haverstock Hill, London, NW3



Total area (approx.): 97.9 sq. m (1,053.8 sq. ft)
Balcony: 4.0 sq. m (43.0 sq. ft)