



West Heath Road, NW3 £2,000,000

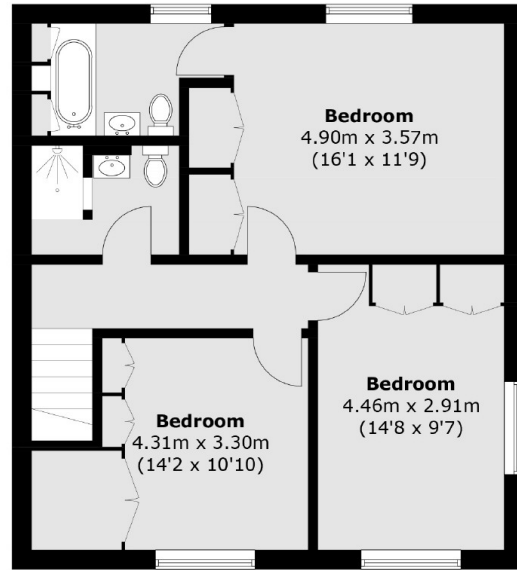
A stunning three double bedroom apartment with plenty of storage that is in fantastic condition. The property, with its own entrance, is over three floors, comes with a separate study and has a lovely private garden that is hardly overlooked.

The property is located on West Heath Road a large tree-lined road close to Hampstead Heath and Golders Hill Park.

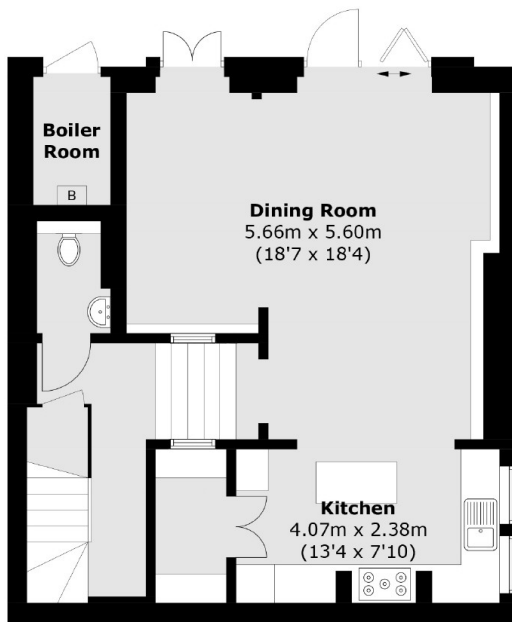
Features

- Private Garden
- Off Street Parking
- Share Of Freehold
- Private Entrance
- Three Bedrooms
- Chain Free

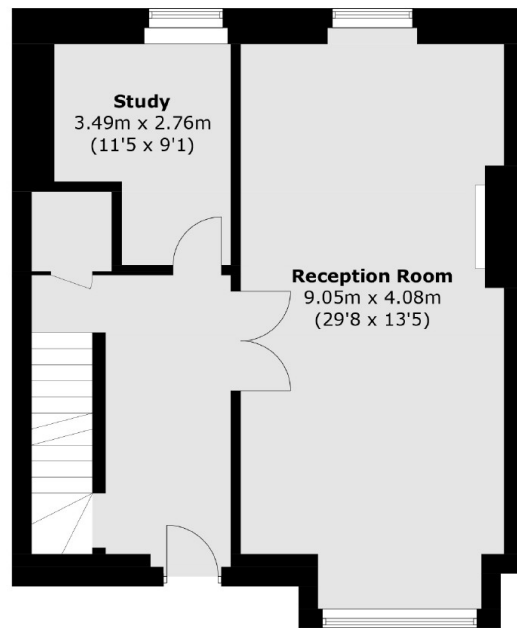
West Heath Road,
London, NW3



First Floor



Lower Ground Floor



Ground Floor

Total area (approx.): 177.3 sq. m (1,908.5 sq. ft)
Boiler Room: 2.4 sq. m (25.8 sq. ft)