



Eton Place, NW3

£695,000

This beautifully presented apartment arranged over the fourth floor of this popular purpose built portered block. The flat has been significantly improved by the current owners including installing new wooden double glazed sash windows and an en-suite shower room to the master bedroom.

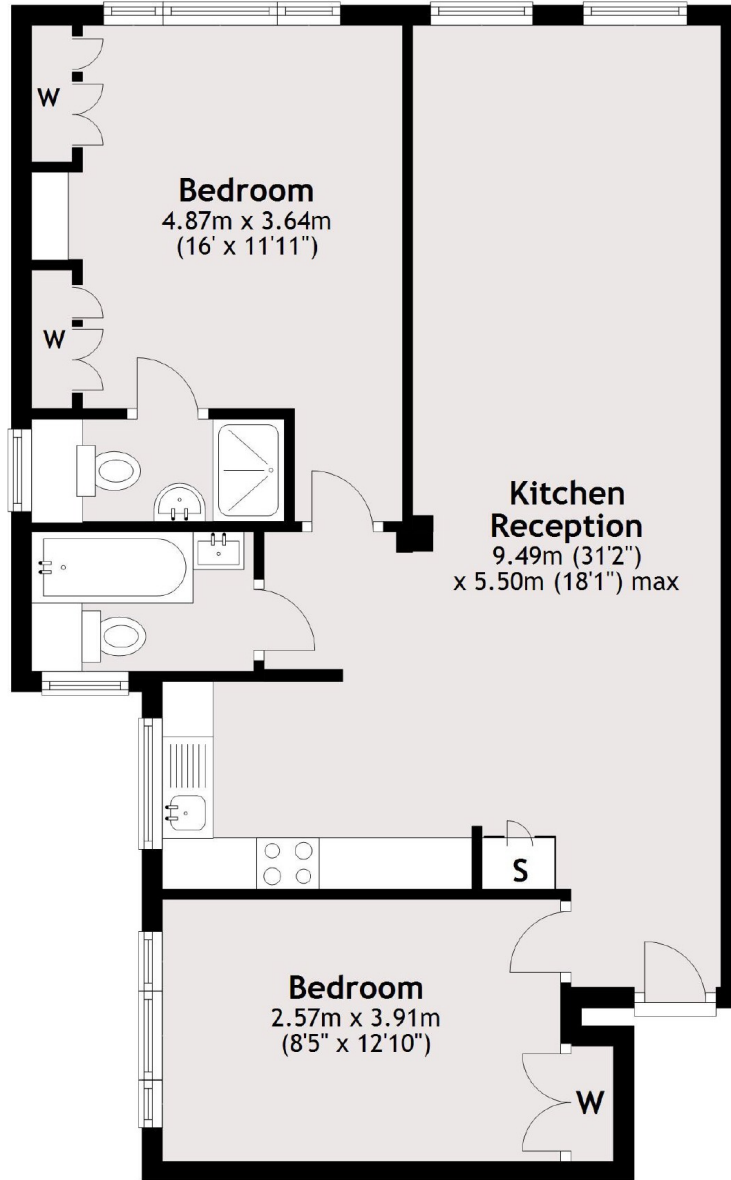
Eton College Road is ideally situated moments from Chalk Farm (Northern line) station. The shopping and restaurant facilities of both Primrose Hill and Camden are a few moments away together with the open spaces at Regent's Park and Primrose Hill.

Features

- Two Double Bedrooms
- Large Reception Room
- Two Bathrooms
- Communal Gardens
- Off Street Parking
- Lift and Porter

Eton Place,
London, NW3

Fifth Floor



Total area: approx. 67.1 sq. metres (722.7 sq. feet)