



## Garnett Road, NW3

£448,750

A superb newly refurbished two double bed roomed flat situated on the ground floor of a popular purpose built block in Belsize Park and offered in wonderful decorative condition throughout.

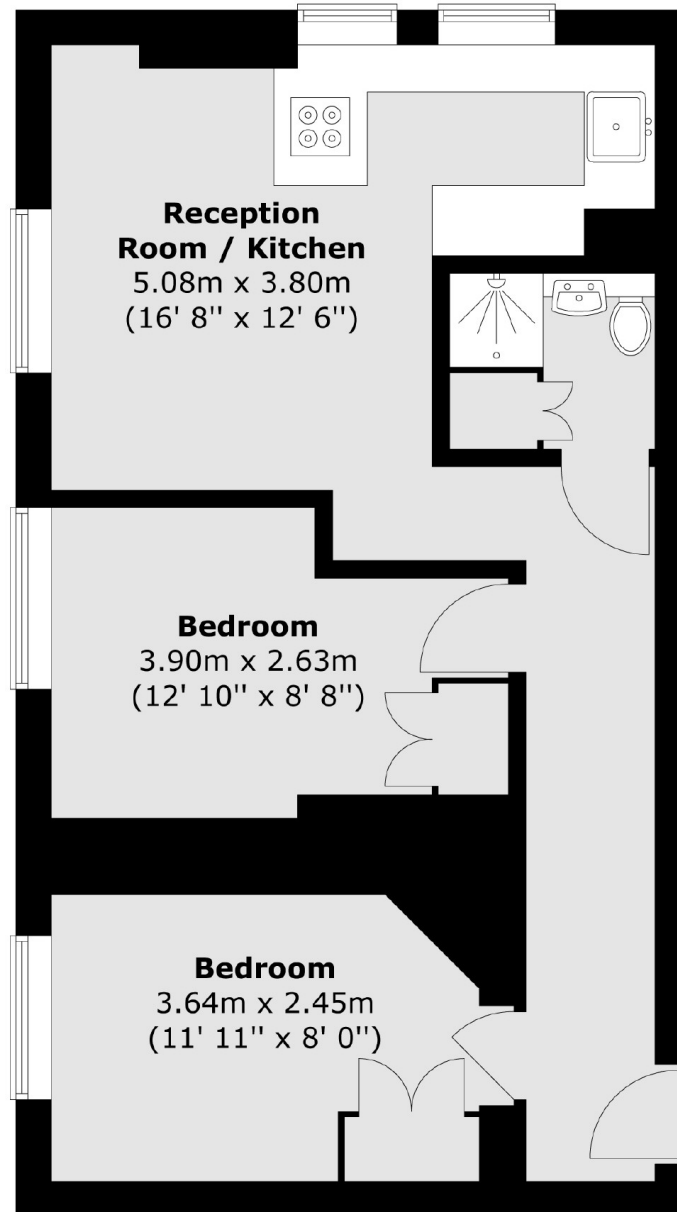
Garnett Road is conveniently placed for both Belsize Park underground (Northern Line) and Hampstead Heath station (Overground) as well as Hampstead Heath itself.

### Features

- Reception Room
- Kitchen Area
- Two Double Bedrooms
- Shower Room
- Convenient Location
- Close To Hampstead Heath

Garnett Road,  
London, NW3

### Ground Floor



Total area (approx.) : 50.1 sq. m (539 sq. ft)