



## Wildwood Road, NW11

£2,250,000

A five bedroom detached family house on one of Hampstead Garden Suburb's premier roads. It has a generous amount of lateral living space on the ground floor, off street parking and a West-facing rear garden.

Located a short distance from the Hampstead Golf Club and Heath Extension, Wildwood Road is right in the heart of Hampstead Garden Suburb. There are direct road links to The West End, The City, the A1 and the North Circular (A406). Nearest Underground stations are Hampstead (1.8m), Highgate (2.0m) and Golders Green (0.1m). Heathrow (18.5m), Luton (27.7m) and City airports (21.6m) are easily accessible for private and commercial flights.

### Features

- Detached
- Off Street Parking
- Five Bedrooms
- Separate Kitchen
- Hampstead Garden Suburb
- Front and Rear Garden



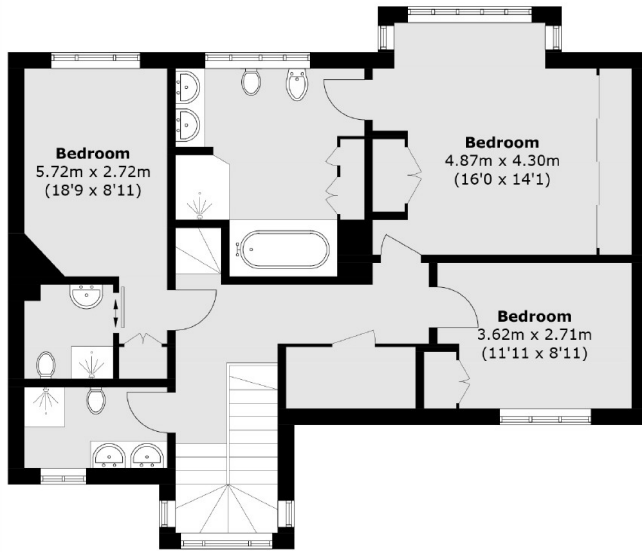
## Wildwood Road, NW11

This spacious family house has a large living room with front and rear windows allowing a lot of natural light into the room. The large kitchen dining room has the main access into the west-facing garden. There are also, an office room, guest WC and utility room on the ground floor.

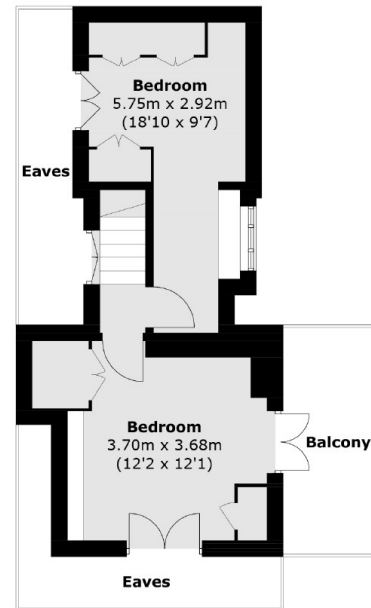
The first floor has the master bedroom with a large en-suite, second bedroom with an en-suite shower room and the third bedroom, which is currently used as a walk in wardrobe. The top floor consists of the final two bedrooms, one with a balcony to the rear of the building.



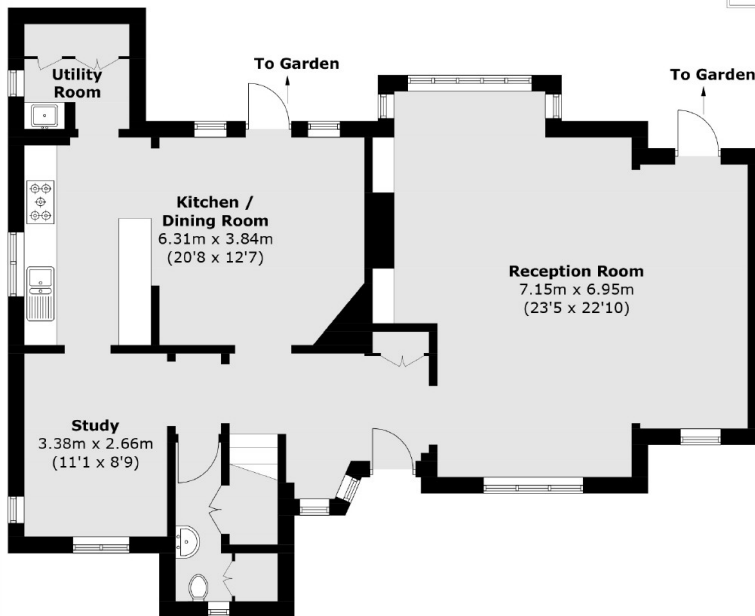
# Wildwood Road, London, NW11



**First Floor**



**Second Floor**



**Ground Floor**

Total area (approx.): 207.3 sq. m (2,231.3 sq. ft)  
(Excluding Eaves)

Balcony area : 7.3 sq. m (78.6 sq. ft)