



## Langland Gardens, NW3

£875,000

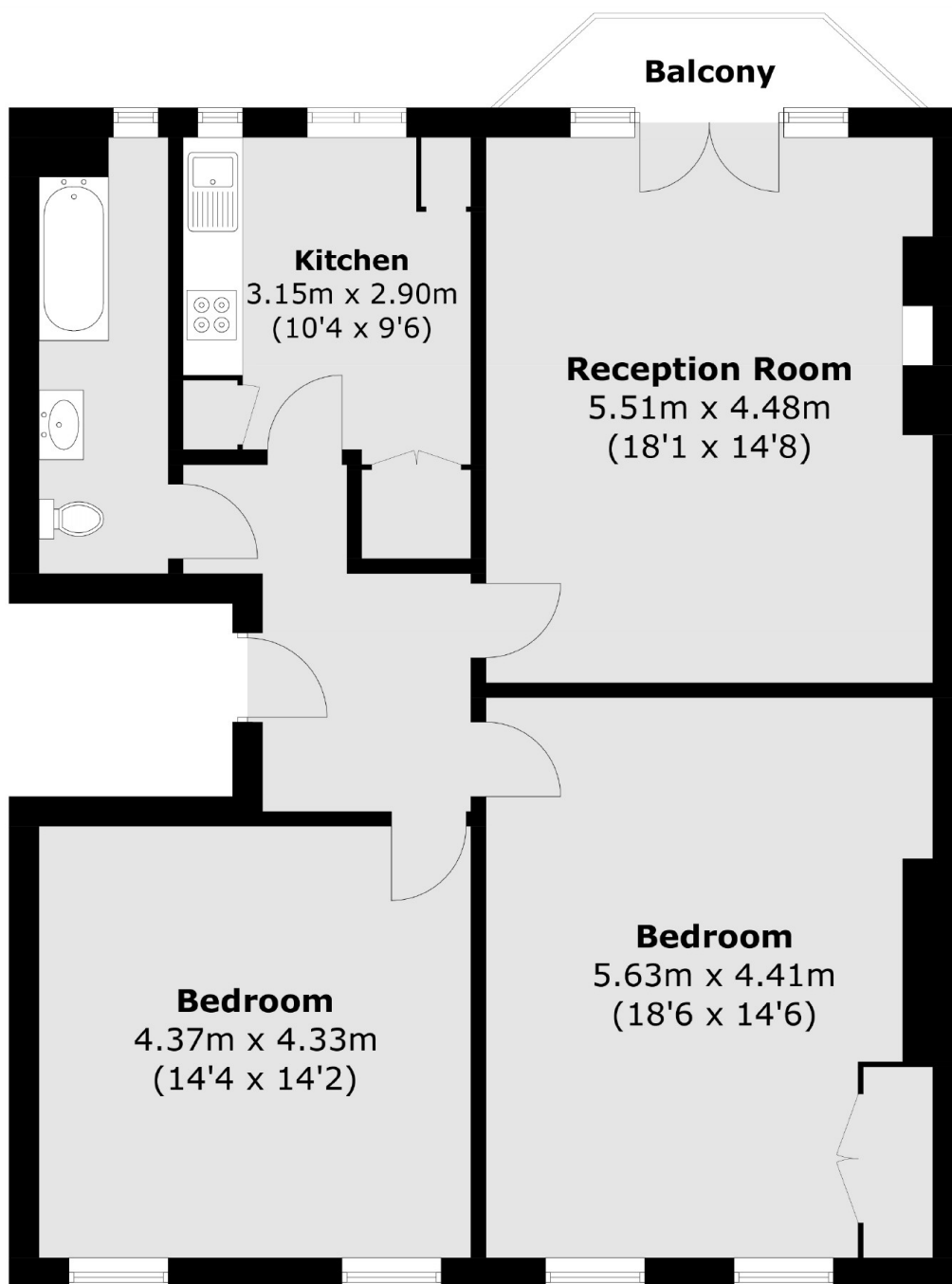
A lovely two double bedroom apartment with a spacious 18' living room. The property has a separate kitchen, lots of windows letting in plenty of natural light and is being sold chain free.

Langland Gardens is conveniently located close to Hampstead Village with nearby underground stations (Northern Line 0.5miles), Finchley Road & Swiss Cottage (Jubilee & Metropolitan Lines 0.5miles) and London Overground Line (Finchley & Frognal 0.3miles), together with an abundance of superb bus routes into Central London.

### Features

- Two Double Bedrooms
- Separate Kitchen
- Long Lease
- Chain Free
- Great Transport Links
- Balcony

# Langland Gardens, London, NW3



Total area (approx.): 96.3 sq. m (1036.6 sq. ft)  
Balcony area : 2.9 sq. m (31.2 sq. ft)