



Belsize Park Gardens, NW3

£1,600,000

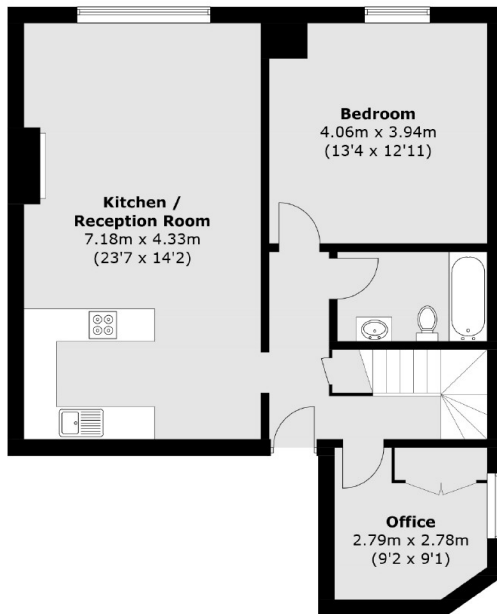
A beautiful two double bedroom apartment (1,310 sq.ft) with a private balcony situated on the upper floors of a stunning white stucco fronted period house. The property is in excellent condition with a modern en suite bathroom, air conditioning and lovely wood flooring.

Belsize Park Gardens considered by many as the most sought after road in Belsize Park is enviably located within a short walking distance of the amenities of Belsize Village, Haverstock Hill and England's Lane. Belsize Park (Northern Line) and Swiss Cottage (Jubilee Line) Underground Stations are both situated within walking distance.

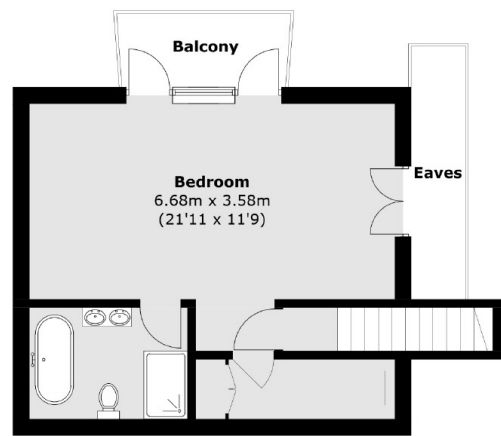
Features

- Share Of Freehold
- Two Double Bedrooms
- Excellent Condition
- South Facing Balcony
- Duplex Apartment
- Two Bathrooms

Belsize Park Gardens, London, NW3



Ground Floor



First Floor

Total area (approx.): 113.8 sq. m (1,224.9 sq. ft)
(Excluding Eaves)
Balcony: 4.2 sq. m (45.2 sq. ft)