



Vale Of Health, NW3

£1,800,000

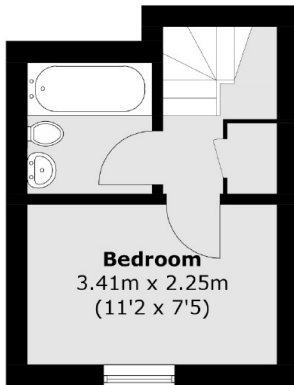
An exceptional three bedroom Grade II Listed house arranged over three floors set in the idyllic Vale of Health in Hampstead. A unique opportunity for a potential family home once developed and restored.

The Vale of Health is a delightful enclave surrounded by Hampstead Heath and yet still within easy access of Hampstead Village and the Underground Station (Northern Line).

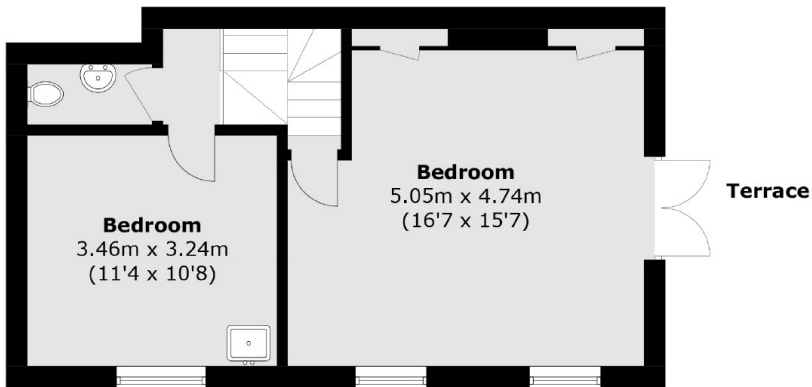
Features

- Off Street Parking
- Three Bedrooms
- Moments from the Heath
- Roof Terrace
- Grade II Listed
- Freehold

Vale Of Health, London, NW3

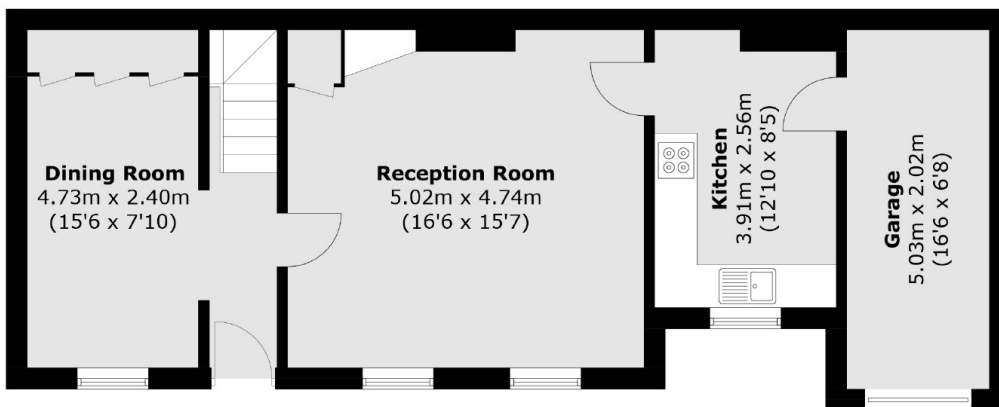


Second Floor - Left



First Floor - Left

First Floor - Right



Ground Floor

Total area (approx.): 117.8 sq. m (1,268.0 sq. ft)