



## Belsize Crescent, NW3

£625,000

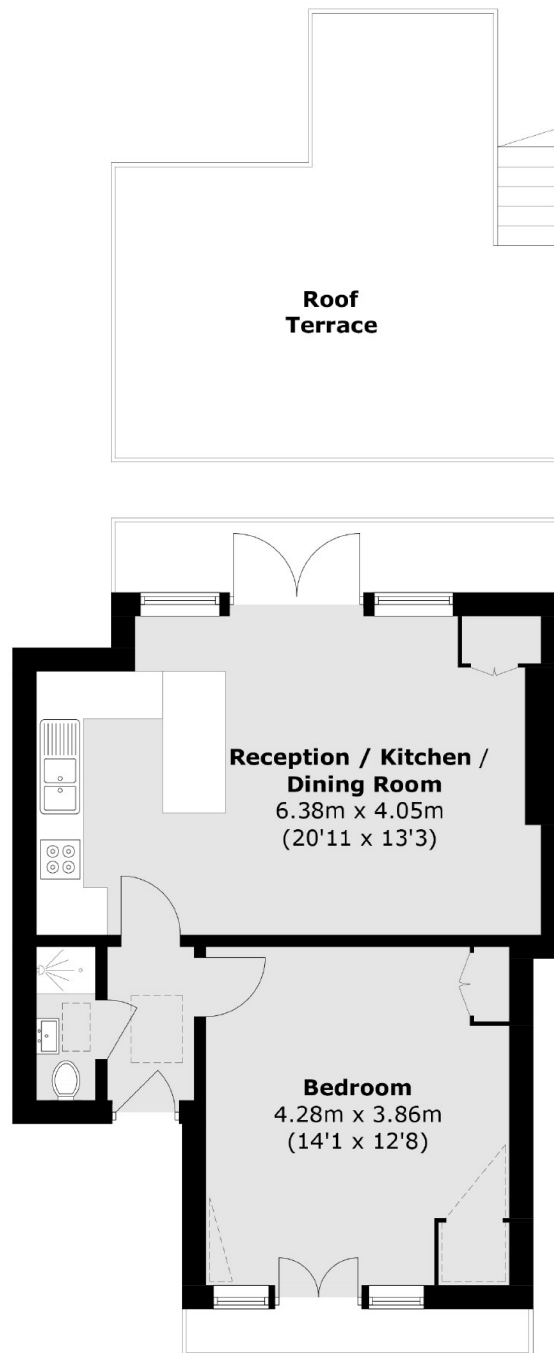
A stunning one double bedroom apartment that has a 20' open plan kitchen / living room with sliding doors that let in lots of natural light. The property has a balcony and roof terrace where you can enjoy panoramic views of the City.

The location of this residence is highly desirable, with the Hampstead Heath just moments away. The area is known for its excellent schools, gourmet restaurants, and cultural attractions, providing residents with a vibrant and sophisticated lifestyle. Swiss Cottage (Jubilee Line) and Belsize Park (Northern Line) are the nearest underground stations .

### Features

- One Double Bedroom
- Open Plan Kitchen
- Share of Freehold
- South Facing Roof Terrace
- Stunning Views
- Quiet Road

# Belsize Crescent, London, NW3



Total area (approx.): 47.2 sq. m (508.0 sq. ft)  
External area : 31.9 sq. m (343.3 sq. ft)

## Dexters

Hampstead  
56 Heath Street  
London  
NW3 1DL  
Sales  
020 7433 0273

Energy Rating: C. We aim to make our particulars both accurate and reliable. However they are not guaranteed; nor do they form part of an offer or contract. If you require clarification on any points then please contact us, especially if you're traveling some distance to view. Please note that appliances and heating systems have not been tested and therefore no warranties can be given as to their good working order.

 **RICS** | Regulated  
Estate Agent  
and Letting Agent

[dexters.co.uk](https://www.dexters.co.uk)