



Grove Place, NW3

£875,000

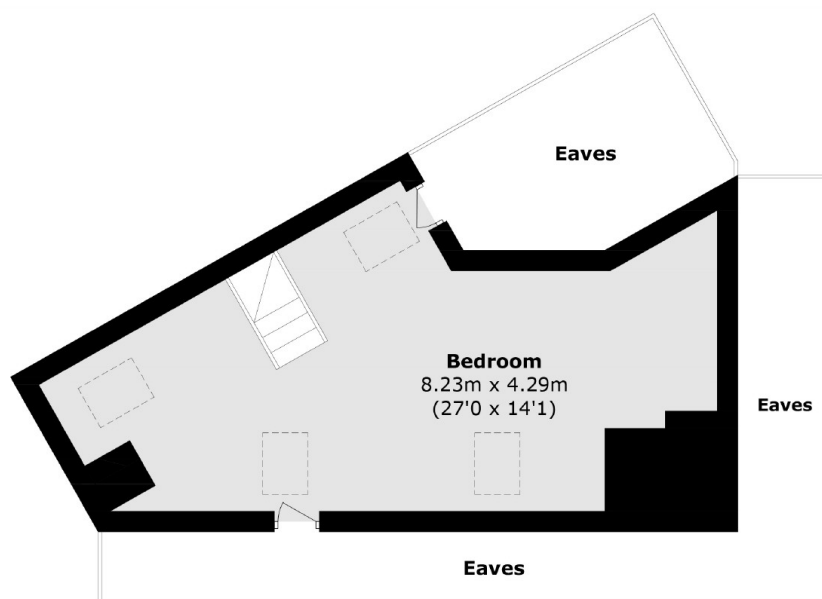
A one of a kind two double bedroom, split level apartment in the heart of Hampstead village, a three minute walk to Hampstead Heath. Extremely bright and with stunning views across the London skyline. In fantastic turnkey condition with lovely wood flooring throughout. Newly fitted modern kitchen and bathroom.

Grove Place is conveniently situated within very close proximity to Hampstead Heath, the shops, restaurants and cafés of Hampstead High Street as well as Hampstead Underground Station (Northern Line).

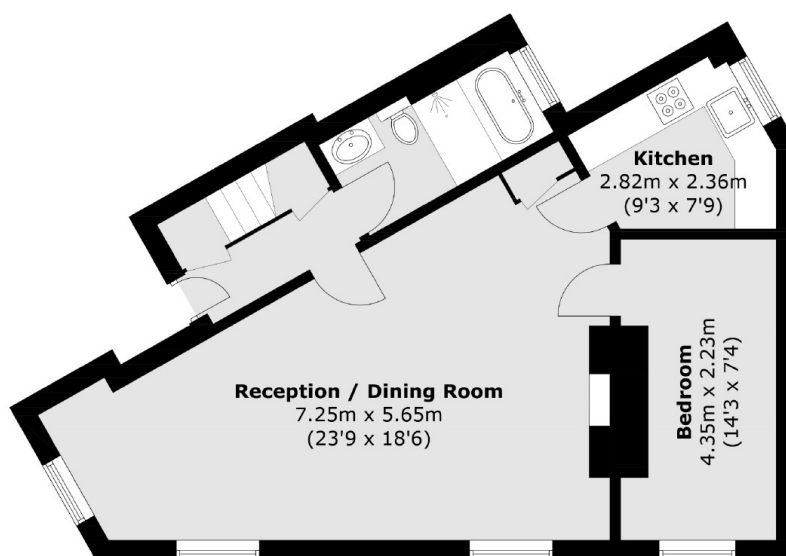
Features

- Two Double Bedrooms
- Excellent Condition
- Spectacular Views
- Bright Property
- Great Storage
- Approximately 915 Sq.Ft

Grove Place, London, NW3



Fourth Floor



Third Floor

Total area (approx.): 90.4 sq. m (973.1 sq. ft)
(Excluding Eaves)