



## Maresfield Gardens, NW3

£800,000

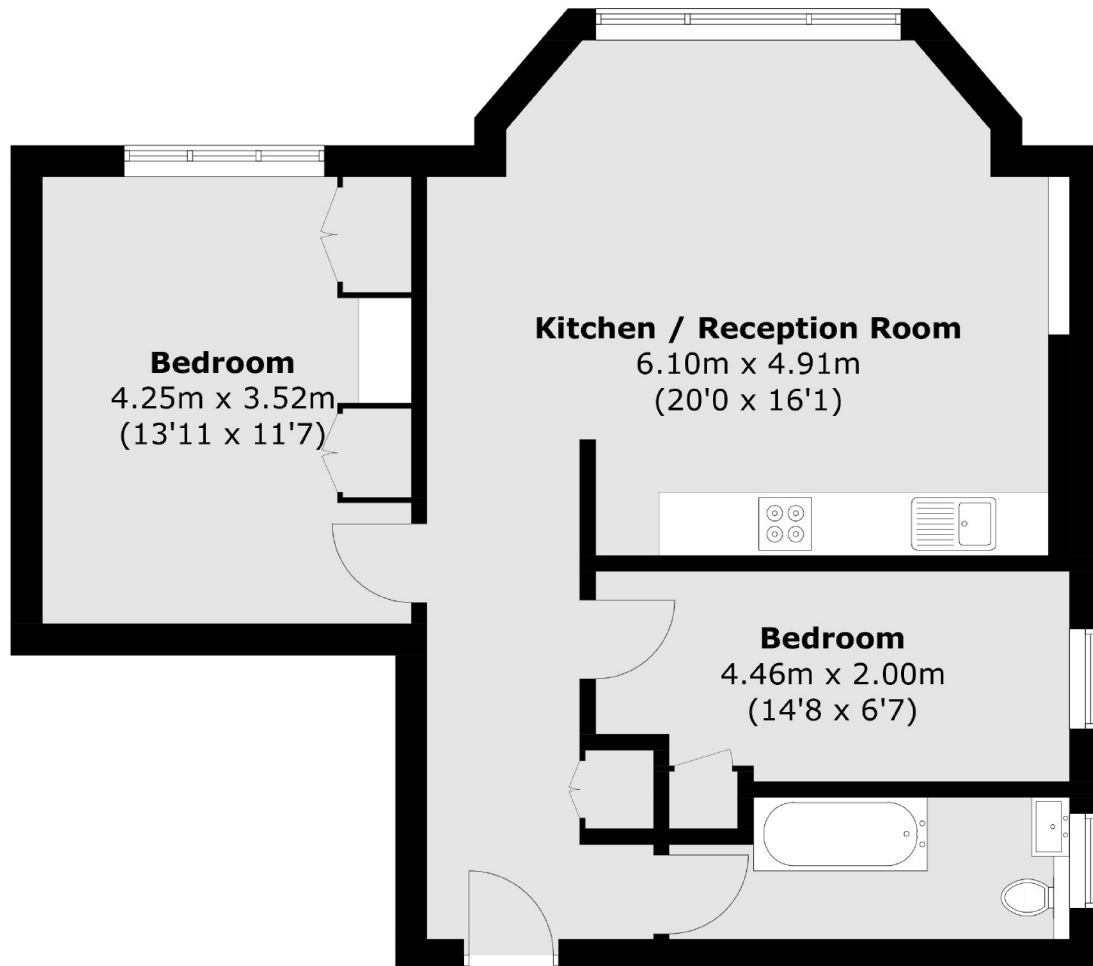
This two bedroom apartment is in very good condition, with a modern bathroom and an open plan kitchen / living room that allows in lots of natural light via three large windows. The property has a lock up garage and access to a communal garden.

Maresfield Gardens is located between Hampstead Village, Swiss Cottage and Finchley Road, so is well located for the multiple shops and restaurants of Hampstead and Finchley Road, with access to Northern, Jubilee and Metropolitan Lines.

### Features

- Two Bedrooms
- Top Floor
- Long Lease
- Lock Up Garage
- Communal Garden
- Excellent Condition

# Maresfield Gardens, London, NW3



Total area (approx.): 65.2 sq. m (701.8 sq. ft)