



North End Road, NW11

£995,000

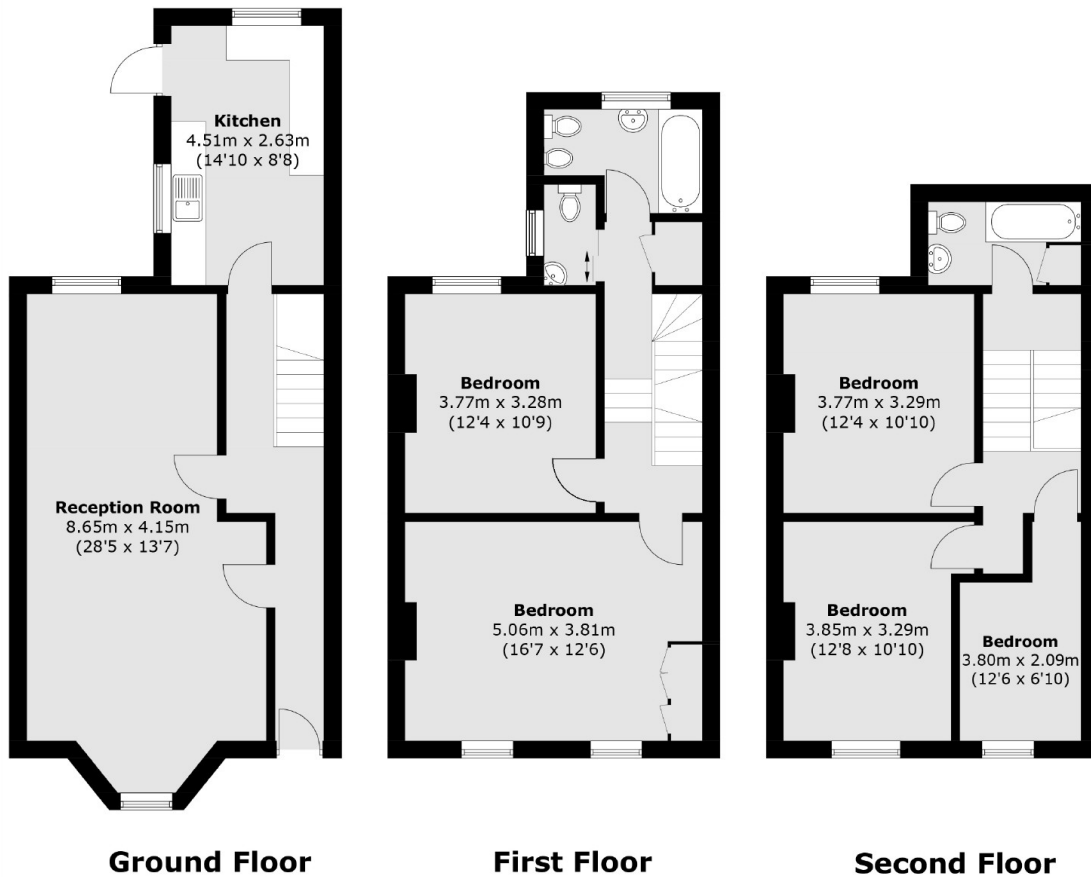
A five bedroom mid-terrace Victorian house offered to the market chain free and in need of refurbishment. The property has a through lounge, a separate kitchen, a patio garden, two bathrooms and separate W.C.

North End Road is located within easy access of Golders Green tube (Northern line) and coach station (0.4 miles away), as well as the local shops, cafés, amenities and restaurants that Golders Green has to offer.

Features

- Victorian House
- Five Bedrooms
- Requires Refurbishment
- Chain Free
- Two Bathrooms
- Patio Garden

North End Road, London, NW11



Total area (approx.): 146.8 sq. m (1580.1 sq. ft)