



## Maitland Park Villas, NW3

### £500,000

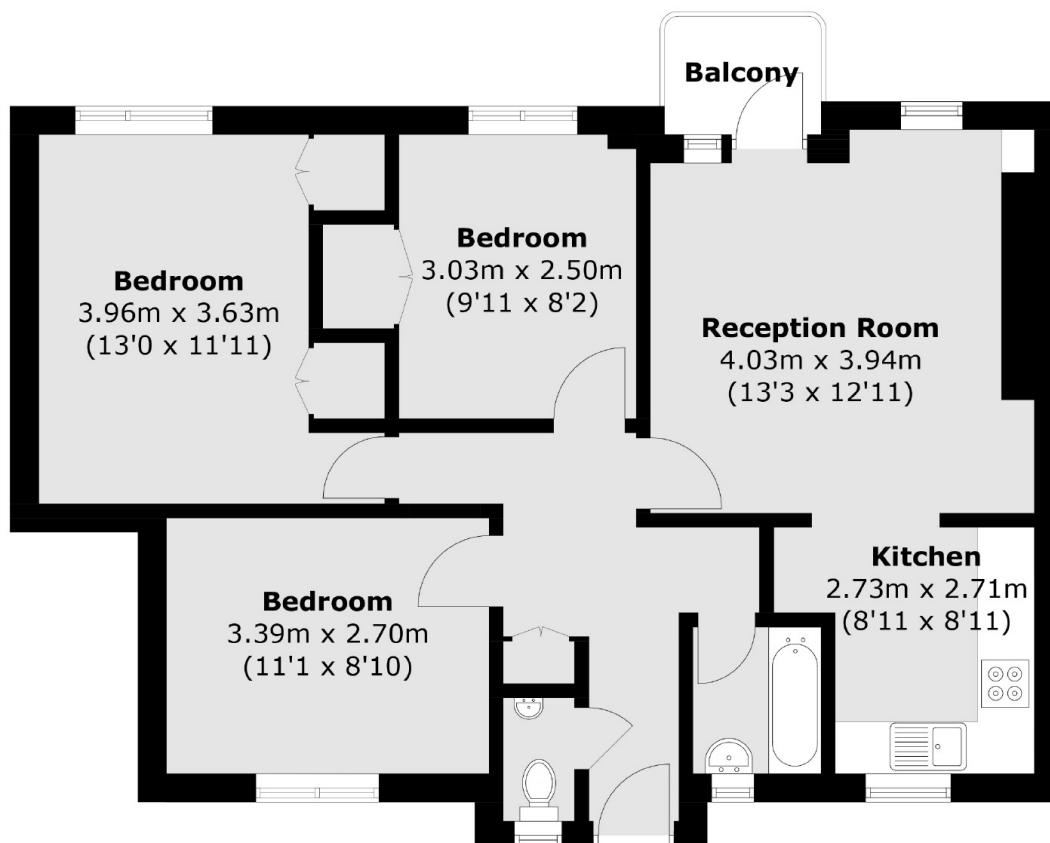
A beautiful and well-configured three bedroom apartment situated on the second floor of this charming period mansion block. The flat is in excellent condition throughout and benefits from a private balcony.

The leafy Maitland Park conservation area is a sought after residential area between Belsize Park and Chalk Farm and is only 0.5 miles away from both Northern line stations. Hampstead Station is also easily accessible, including the variety of shops, restaurants and cafes surrounding the area.

### Features

- Three Bedrooms
- Modern Interior
- Excellent Location
- Balcony
- Off Street Parking
- Charming Mansion Block

# Maitland Park Villas, London, NW3



Total area (approx.): 67.6 sq. m (727.6 sq. ft)  
Balcony (approx.): 2.0 sq. m (21.5 sq. ft)