



Whitney's
ESTATE AGENTS LTD
Established 1947

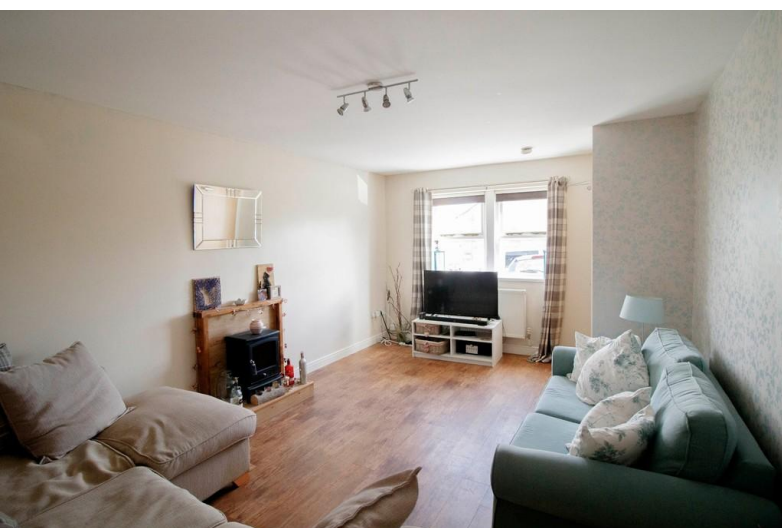
12 Heathcliff Mews

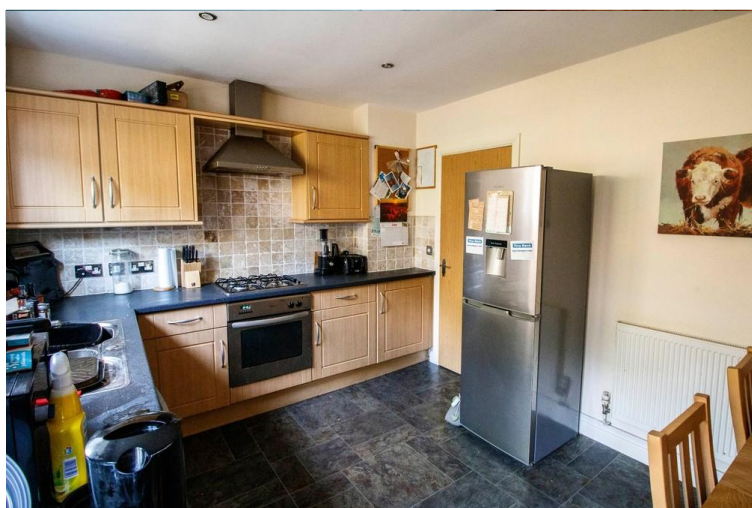
Thornton, Bradford, BD13 3HY

- MODERN MEWS STYLE TOWN HOUSE
- DISTANT VIEWS FROM 1ST FLOOR
- LOUNGE
- MODERN DINING KITCHEN

Offers In Region Of £174,950

EPC Rating '74'





Property Description

Situated close to the centre of Thornton Village and all amenities is this Modern Mews Style Town House with accommodation over three floors. The property briefly comprises of Lounge, Modern Dining Kitchen to ground floor. Two Bedrooms and Bathroom to first floor and Two Bedroom and Shower Room to the third floor. Block Paved area to front providing parking and paved garden to rear. Distant Views from first floor.

ENTRANCE

Via front door to reception hallway with stairs to first floor and door to lounge, laminated floor and central heating radiator.

LOUNGE

15' 8" x 11' 8" (4.78m x 3.56m) SUDG window. Laminate floor. Central heating radiator. Door to under stairs cloaks cupboard which is plumbed for a wc. Door to dining kitchen.



DINING KITCHEN

15' 1" x 9' 10" (4.6m x 3m) SUDG window. Modern range of wall and base units with complimentary work surfaces and tiling. Inset stainless steel sink with mixer tap. Inset stainless steel oven and hob with stainless steel extractor canopy above. Plumbing for washer. Central heating radiator. Door to rear garden.

FIRST FLOOR

SUDG window. Doors to bedrooms and bathroom. Stairs to second floor.



BEDROOM

15' 3" x 12' 0" (4.65m x 3.66m) SUDG window. Central heating radiator.

BEDROOM

9' 2" x 8' 7" (2.79m x 2.62m) SUDG window. Central heating radiator.

BATHROOM

8' 4" x 7' 9" (2.54m x 2.36m) Modern white four piece suite comprising of large bath, corner shower cubicle, hand wash basin and wc. Central heating radiator. Complementary tiling.

SECOND FLOOR

Landing area with doors bedrooms and shower room.



BEDROOM

15' 2" x 11' 5" (4.62m x 3.48m) Two velux windows. Central heating radiator.

BEDROOM

12' 0" x 11' 5" (3.66m x 3.48m) Two Velux windows. Central heating radiator.

SHOWER ROOM

7' 3" x 5' 5" (2.21m x 1.65m) Modern white three piece suite comprising of corner shower cubicle, hand wash basin and wc. Extractor fan. Towel radiator.

EXTERIOR

Blocked paved parking area to front. Paved garden to rear.





DIRECTIONS:

From Bradford centre travel along Thornton Road (B6145) passing through five sets of traffic lights, continue along this road passing Beckfoot Thornton School on your left and pass over the double mini roundabout at School Green. continue along this road and take your third right into Springhead Road and first right into Brooklands Avenue. Continue along this road into North Cliffe bearing left at the top into Sapgate Lane. Continue along this road to the cobbled road and Heathdiffe Mews is on your right.



PURCHASE DETAILS:

Please note that the services & appliances have not been tested & the property is sold on that basis.

Once you are interested in purchasing this property, ideally call in person or telephone this office to discuss your offer, we would suggest that this is done before contacting a bank, building society or solicitor as any delay could result in the property being sold to someone else and any survey and legal fees being unnecessarily incurred.

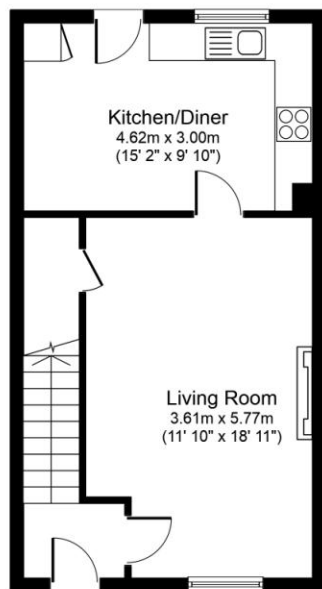


VALUATION: If you are thinking of selling your home, why not contact one of our offices now for a **FREE VALUATION** strictly without any obligation. Contact us on Bradford (01274) 880019.

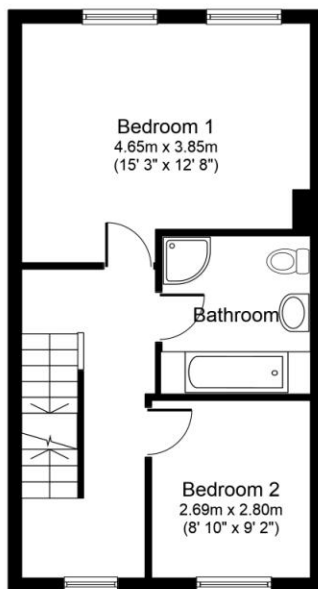
MORTGAGES: A full range of mortgage facilities are available subject to status. Our Financial Consultant will be only too happy to discuss with you your individual requirements. Please contact us for **FREE & CONFIDENTIAL ADVICE**.



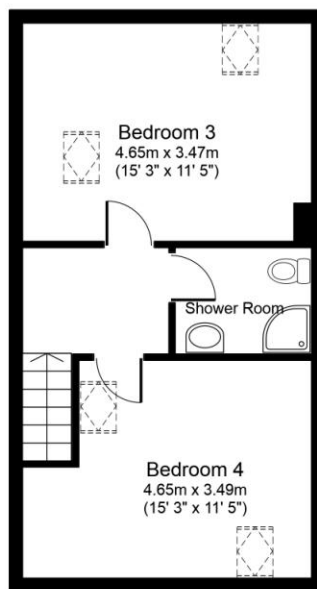
RENT-A-HOUSE: Thinking of renting your HOUSE? FLAT? Contact (01274) 880019 for further details.



Ground Floor

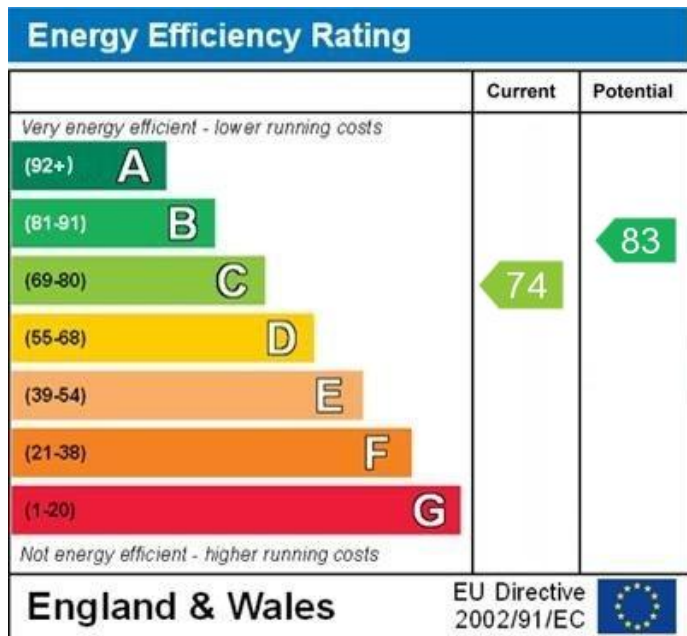


First Floor



Second Floor

Created using Vision Publisher™



WWW.EPC4U.COM