



**1 Bed
Flat - Purpose Built
located in South Croydon**



21 Mayfield Road
South Croydon
CR2 0BG



1



1



1



E

Entrance Porch

Communal entrance. Entry phone system. Stairs to top floor.

Entrance Hall

Storage heater. Cupboard.

Reception area

11'10 x 10'2

Double glazed windows to side and rear. Storage heater.

Bedroom

10'2 x 7'3

Window to rear.

Kitchen

9'6 x 8'3

Double glazed window to side. Range of wall and base units with work surfaces over. Built-in oven and hob. Stainless steel single drainer sink unit. Tiled flooring.

Bathroom

Panelled bath. Pedestal wash hand basin. Low level wc.

Tenure

"We are advised by the vendor that the tenure is Leasehold with Share of Freehold Lease 982 years remaining, £960.00pa Service Charge and £80pa Ground rent " (Awaiting verification).

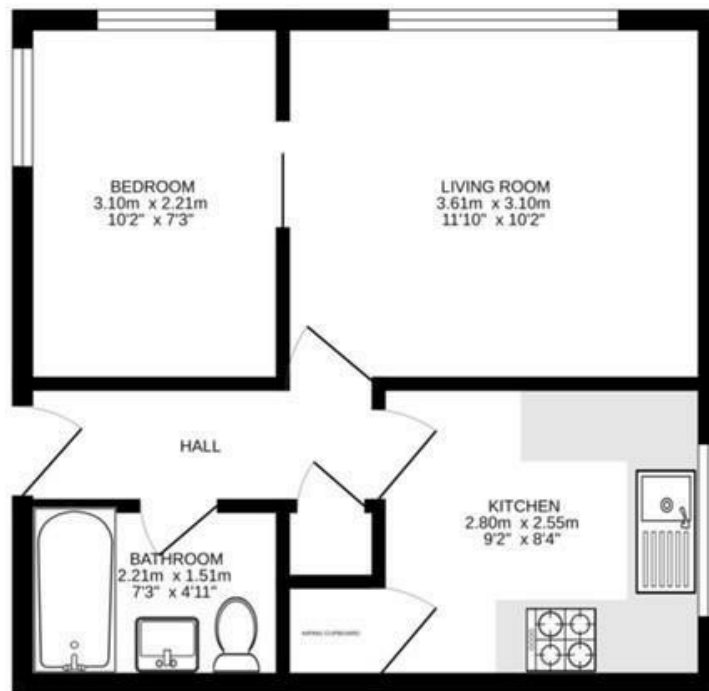
Authority

London Borough Of Croydon. Band B £1840.93

Asking price £209,995

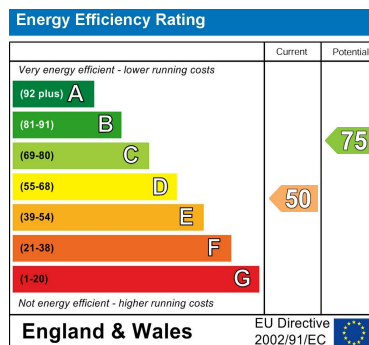
With SHARE OF FREEHOLD and 982 YEAR LEASE, RECENTLY DECORATED STUDIO/ONE BEDROOM SECOND FLOOR PURPOSE BUILT FLAT. Situated in a popular tree lined road, a minutes walk from Sanderstead Railway Station and local transport links. Viewing recommended. Ideal first purchase or investment. Croydon Council Tax Band B (£1,840.93)





First floor
32.9 sq.m. (354 sq.ft.) approx.

TOTAL FLOOR AREA: 32.9 sq.m. (354 sq.ft.) approx.
Measurements are Approximate. Not to scale. Illustrative purposes only.
Made with Metropix (2022)



DIRECTIONS

CONTACT

5 High Street
London
SE25 6EP

E: Info@northwoods.co.uk

T: 020 8653 3377

northwoods.co.uk

