



**2 Bed
Flat - Conversion
located in South Norwood**



Flat 3, 38 Dagnall Park
South Norwood
London
SE25 5PH



Offers over £350,000

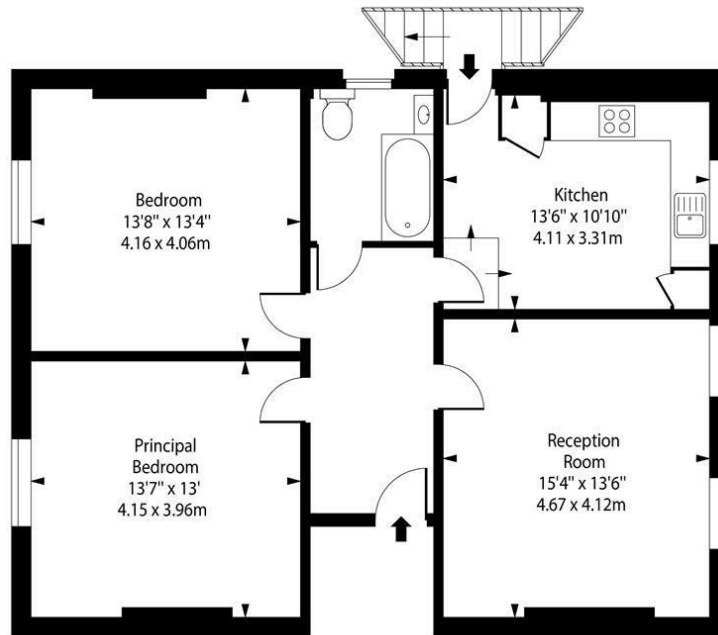
Guide price £375,000-£400,000 Recently refurbished VICTORIAN STYLE TWO LARGE DOUBLE BEDROOMED FIRST FLOOR FLAT, boasting fantastic light throughout.

Measuring 828 sq. ft this beautiful apartment is offered to the market chain free and is in fantastic condition throughout. Comprising a large entrance hall that leads into A bright and airy reception room, two large bedrooms, kitchen/diner and newly fitted bathroom.

Local amenities are plentiful with a large array of convenience stores, shops and the well known Brit school. Transport links are ideally situated from Selhurst Railway Station with direct links to London, or a short bus to Norwood Junction railway/ Overground station Thameslink sevice. Council Tax Band C £2204.87



Second Floor



Total Internal Area
81.01 sq.m (872 sq. ft.)

FOR ILLUSTRATIVE PURPOSES ONLY

Whilst every attempt has been made to ensure the accuracy of this floor plan contained here, we cannot take any responsibility for any errors



Energy Efficiency Rating		
	Current	Potential
Very energy efficient - lower running costs		
(92 plus) A		
(81-91) B		
(69-80) C	74	
(55-68) D		
(39-54) E		
(21-38) F		
(1-20) G		
Not energy efficient - higher running costs		
England & Wales	EU Directive 2002/91/EC	

DIRECTIONS

CONTACT

5 High Street
London
SE25 6EP

E: Info@northwoods.co.uk

T: 020 8653 3377

northwoods.co.uk

