



Locksbridge House, Gilles Meadow, Basingstoke

BELVOIR!

Offers over £200,000



PROPERTY

This modern first floor apartment with spacious rooms is situated close to amenities in Rooksdown and positioned close to the Basingstoke and North Hampshire Hospital. Boasting a stylish and modern design, this property offers a comfortable and contemporary living space that is sure to captivate both first-time buyers and professional purchasers alike.

ACCOMMODATION

This accommodation features one particularly large bedroom, providing ample space for modern living including home working if required. The main bathroom has a modern suite with window to the rear. The double aspect windows in the lounge and kitchen flood the entire space with natural light, creating a bright and airy feel. The spacious balcony adds an al-fresco twist to the living area to complement the reception space. Located very close to a Co-op convenience store as well as having an allocated parking space.

LOCATION

Residents of Rooksdown benefit from excellent transport links, with easy access to major road networks and public transportation options, ensuring seamless connectivity to the surrounding areas. The development also offers convenient amenities including doctor's surgery, pharmacy and community centre as well as green spaces within walking distance, including shops, cafes, and recreational areas as well as Castle Hill Primary School.

TENURE Leasehold

Service Charge £1200PA

Ground Rent: £180PA

Lease Remaining: 999 years remaining From 1st May 2018

LOCAL AUTHORITY Basingstoke and Deane

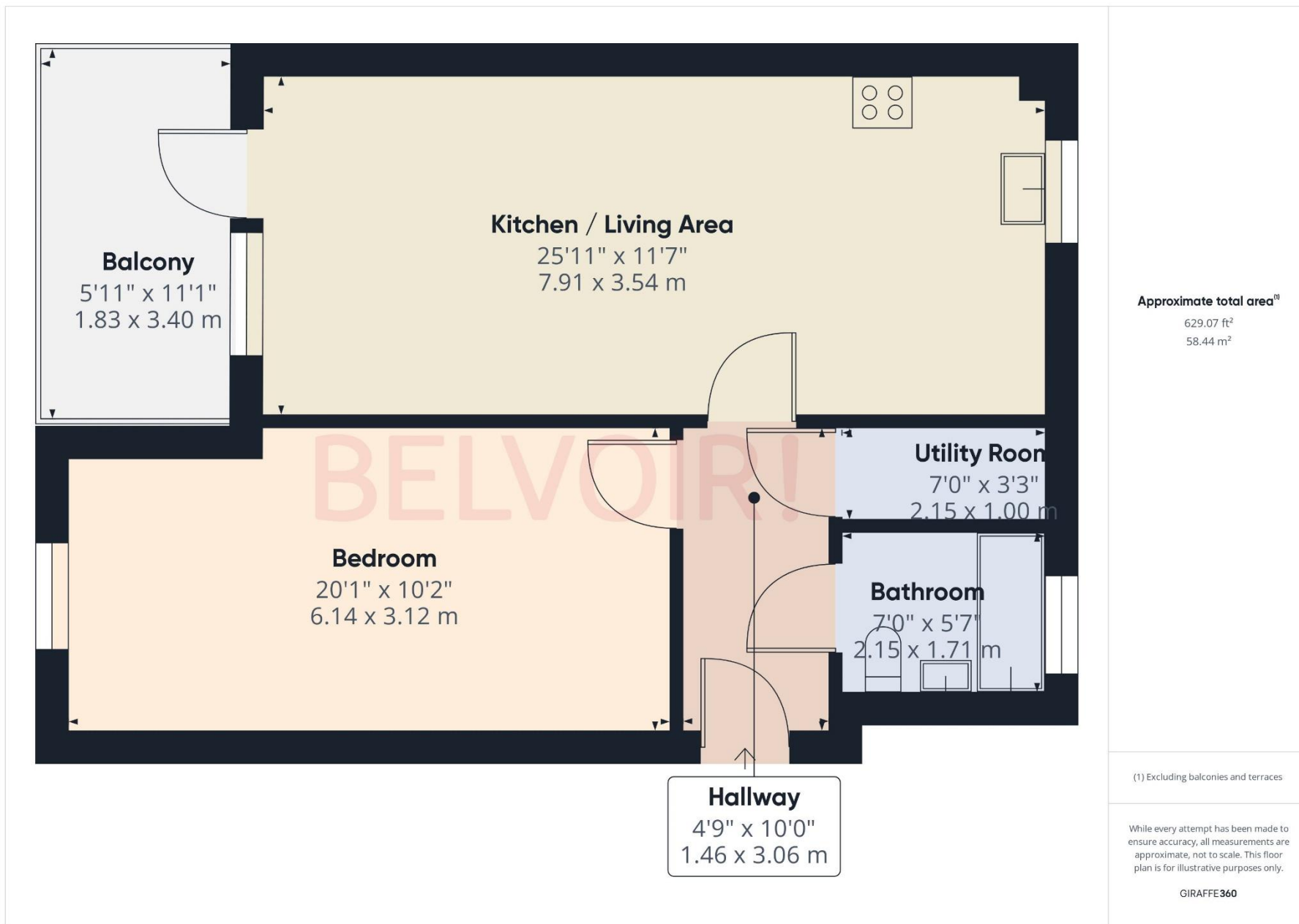
COUNCIL TAX BAND B

EPC B





Score	Energy rating	Current	Potential
92+	A		
81-91	B	84 B	84 B
69-80	C		
55-68	D		
39-54	E		
21-38	F		
1-20	G		



Contact us today to arrange a viewing...

www.belvoir.co.uk/offices/basingstoke

BELVOIR!

01256 830800