



2  1  2 

Greenlands Road, Limes Park, Basingstoke

Guide price £225,000

BELVOIR!



PROPERTY:

Modern first floor apartment with spacious rooms situated in Limes Park with great parking options and positioned close to the Basingstoke and North Hampshire Hospital. Boasting a stylish and modern design, this property offers a comfortable and contemporary living space that is sure to captivate both first-time buyers and professional purchasers alike.

ACCOMMODATION:

This apartment features two bedrooms, providing ample space for modern living including home working. The two bathrooms include an ensuite for added convenience as well as a separate bathroom. The double aspect windows in the lounge and kitchen flood the entire space with natural light, creating a bright and airy feel. Located very close to a Co-op convenience store as well as having an allocated parking space and further visitors spaces.

LOCATION:

Residents of the Limes Park Development benefit from excellent transport links, with easy access to major road networks and public transportation options, ensuring seamless connectivity to the surrounding areas. The development also offers convenient amenities including doctor's surgery, pharmacy and community centre as well as green spaces within walking distance, including shops, cafes, and recreational areas as well as Castle Hill Primary School.

TENURE: Leasehold

SERVICE CHARGE: £1900 PA

GROUND RENT: £150 PA

LEASE: 116 years remaining. Start date 1st January 2015

LOCAL AUTHORITY: Basingstoke and Deane

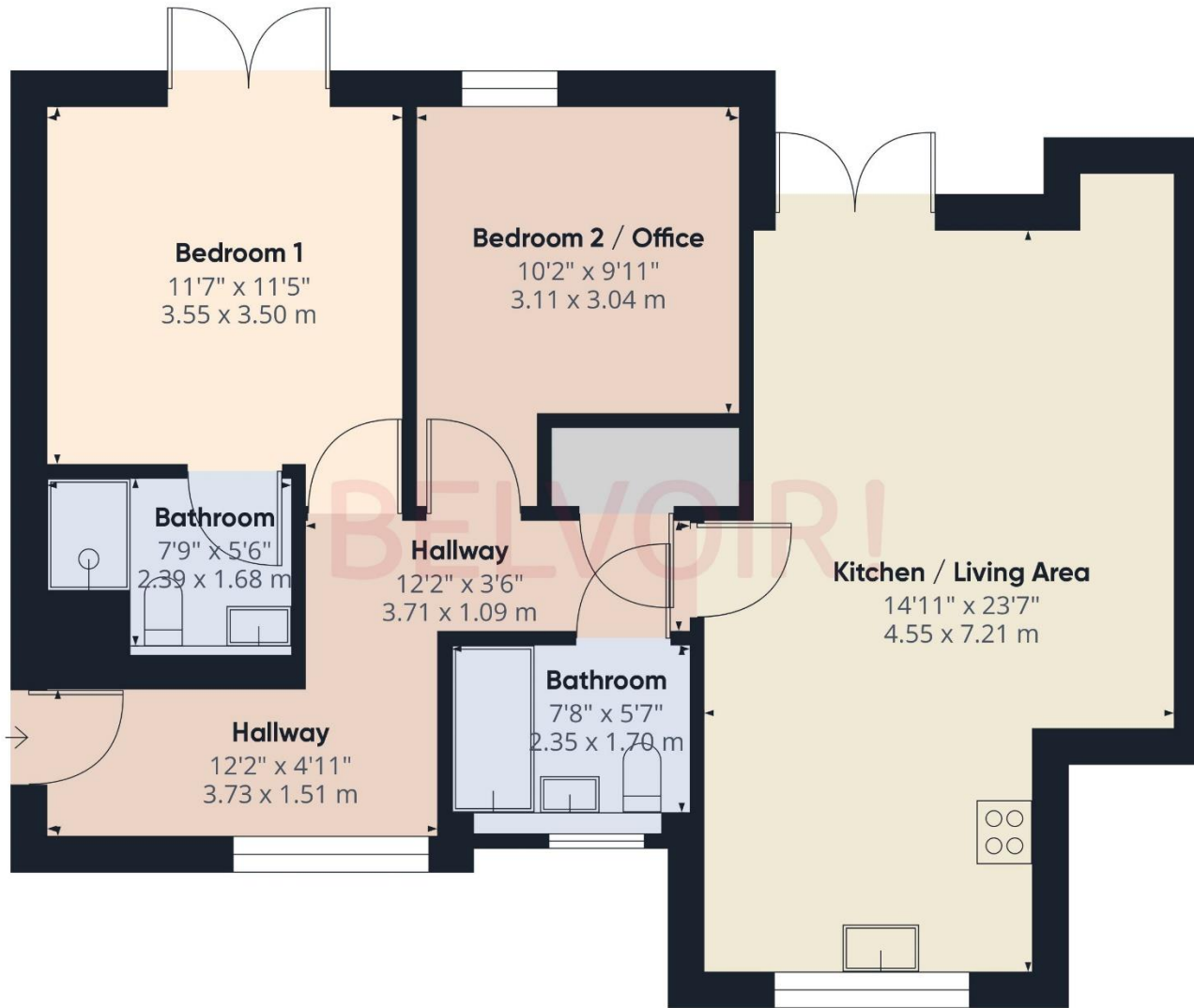
COUNCIL TAX: Band C

EPC: C





| Score | Energy rating | Current | Potential |
|-------|---------------|---------|-----------|
| 92+ | A | | |
| 81-91 | B | | |
| 69-80 | C | 80 C | 80 C |
| 55-68 | D | | |
| 39-54 | E | | |
| 21-38 | F | | |
| 1-20 | G | | |



Approximate total area⁽¹⁾
792.21 ft²
73.6 m²

Excluding balconies and terraces

While every attempt has been made to ensure accuracy, all measurements are approximate, not to scale. This floor plan is for illustrative purposes only.

GIRAFFE360

Contact us today to arrange a viewing...

www.belvoir.co.uk/offices/basingstoke

BELVOIR!

01256 830800