



**Evesham Road, Stratford-Upon-Avon, CV37 9BE**

**SHELDON  
BOSLEY  
KNIGHT**

LAND AND  
PROPERTY  
PROFESSIONALS



# Property Description

*\*Project Property Requiring Modernisation & Upgrading Throughout\**

Positioned within a mile of Stratford-upon-Avon Town Centre, this bay fronted semi detached home is full of charm and potential. Retaining many original features, the property requires updating throughout, making it an ideal project for first time buyers or those seeking an investment opportunity.

The ground floor offers two spacious reception rooms, well suited as a lounge and dining area. The extended kitchen provides access to the garden. Upstairs, there are three bedrooms along with a family bathroom.

The generous rear garden leads to a double garage and off road parking.

Offered with no onward chain, this is a rare opportunity to purchase a character property in a sought after location with fantastic potential for improvement.







## Key Features

- Prime Stratford Location
- Semi Detached
- 3 Bedrooms
- 2 Reception Rooms
- Requires Modernisation & Upgrading Throughout
- Potential To Improve
- Generous Garden
- Double Garage & Off Road Parking To Rear
- Ideal First Time Or Investment Purchase
- No Onward Chain

**Offers Over  
£350,000**

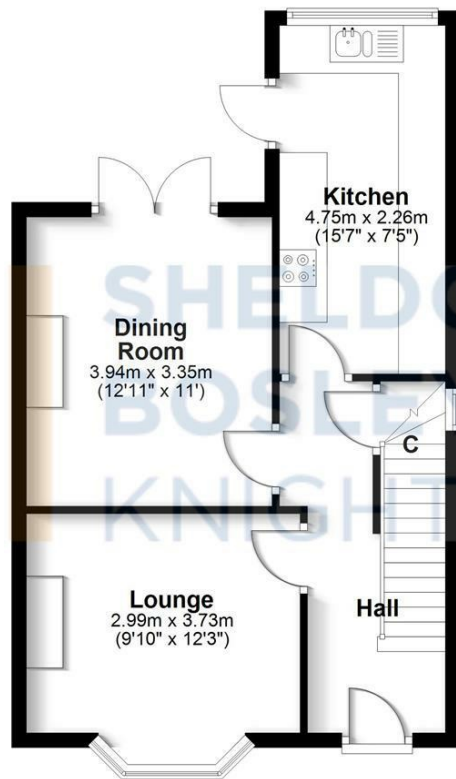






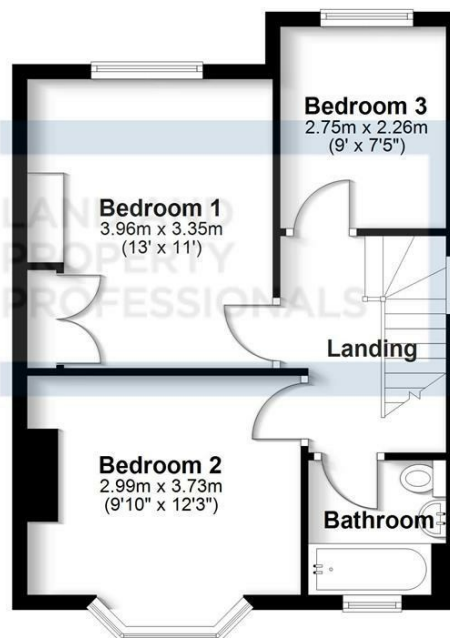
## Ground Floor

Approx. 46.3 sq. metres (498.2 sq. feet)



## First Floor

Approx. 42.1 sq. metres (452.8 sq. feet)



Total area: approx. 88.4 sq. metres (951.1 sq. feet)

All efforts have been made to ensure the measurements are accurate on this floor plan, however these are for guidance purposes only.  
Plan produced using PlanUp.



EPC Rating - E

Tenure - Freehold

Council Tax Band - D

Local Authority  
Stratford-upon-Avon





We routinely refer clients to both our recommended legal firm and a panel of financial services providers. It is your decision whether you choose to deal with these companies. In making that decision, you should know that we receive a referral fee.

**SHELDON  
BOSLEY  
KNIGHT**

LAND AND  
PROPERTY  
PROFESSIONALS