



Shottery Road, Stratford-Upon-Avon, CV37 9QH

**SHELDON
BOSLEY
KNIGHT**

LAND AND
PROPERTY
PROFESSIONALS

Property Description

*** AVAILABLE NOW *** A charming 2 Bedroom mid terraced cottage in a desirable position backing onto Shottery Fields. This home is set back from the road with mature trees providing an attractive outlook and a gravel driveway providing parking for 2 cars off street. All of Stratford's amenities in the town centre are within walking distance. The front entrance leads into a hallway off which is a delightful living room which has lots of natural light from the windows facing front and back. This room leads into the kitchen at the rear which has recently undergone a refresh, there is an integrated oven and hob, freestanding fridge freezer and space for a tenant to bring their own washing machine, there is a handy ground floor WC. The second reception room flows neatly off the kitchen but this space could also be utilised as a home study. The garden has a decked area, shed, many mature plants and a gate leading directly onto Shottery Fields. The first floor houses 2 double bedrooms both with built in wardrobes. The bathroom has been newly fitted to a high quality finish. This home is offered unfurnished and benefits from fresh re-decoration throughout. Council Tax Band C. Energy Rating D.

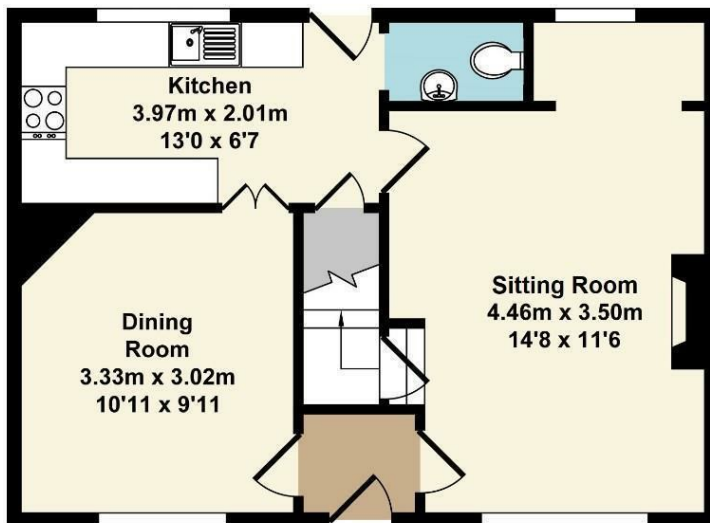




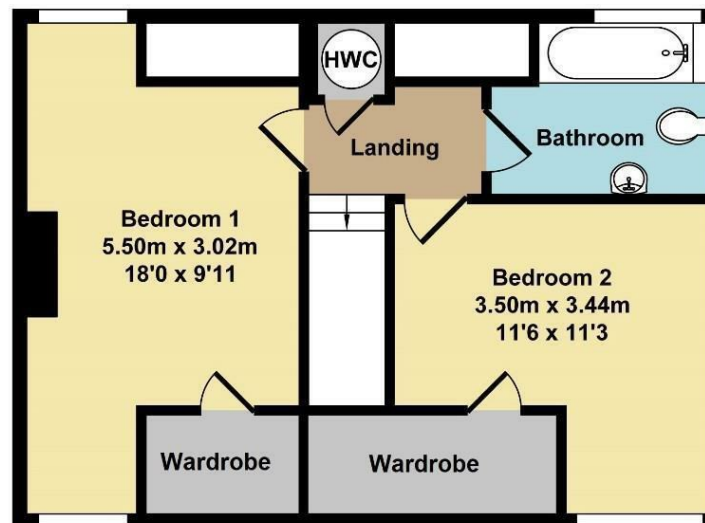
New Cottages, Shottery Road, Stratford, CV37 9QH

Total Approx. Floor Area 82.20 Sq.M. (885 Sq.Ft.)

Whilst every attempt has been made to ensure the accuracy of the floor plan contained here, measurements of doors, windows, rooms and any other items are approximate and no responsibility is taken for any error, omission, or mis-statement. This plan is for illustrative purposes only and should be used as such by any prospective purchaser. The services, systems and appliances shown have not been tested and no guarantee as to their operability or efficiency can be given.



Ground Floor
Approx. Floor
Area 41.10 Sq.M.
(442 Sq.Ft.)



First Floor
Approx. Floor
Area 41.10 Sq.M.
(442 Sq.Ft.)

Key Features

- *** AVAILABLE NOW ***
- Shottery Road, Stratford upon Avon
- 2 Bedrooms
- Mid-terraced home
- Unfurnished
- Garden
- Driveway Parking
- Council Tax Band
- Energy Rating
- Views over & direct access onto Shottery Fields

£1,400 PCM