



West Lodge, New Road, Temple Grafton, B49 6NY

**SHELDON
BOSLEY
KNIGHT**

LAND AND
PROPERTY
PROFESSIONALS

Property Description

Located in the Village of Temple Grafton, this Victorian lodge has been thoughtfully remodelled to offer a delightful blend of period features and modern comforts. Dating back to the 19th century, West Lodge is surrounded by countryside, situated within the catchment of 3 top grammar schools and excellent primary schools.

The property comprises of:-

Tiled entrance porch to upper reception room, featuring window seats and bay windows with original stone mullions. Hallway to 3 double bedrooms, shower room and separate w.c.

Steps to downstairs reception room; garden room with multi fuel stove and access to paved terrace and garden.

Impressive, large kitchen with granite worktops, dining area and snug. Hallway leading to utility, primary bedroom and en-suite.

The wrap around garden is a significant feature, with large lawned area, part walled vegetable garden, trees and flower beds alongside sheds and a useful store room.

Parking for 4 vehicles and gated access to garden from adjacent lane.



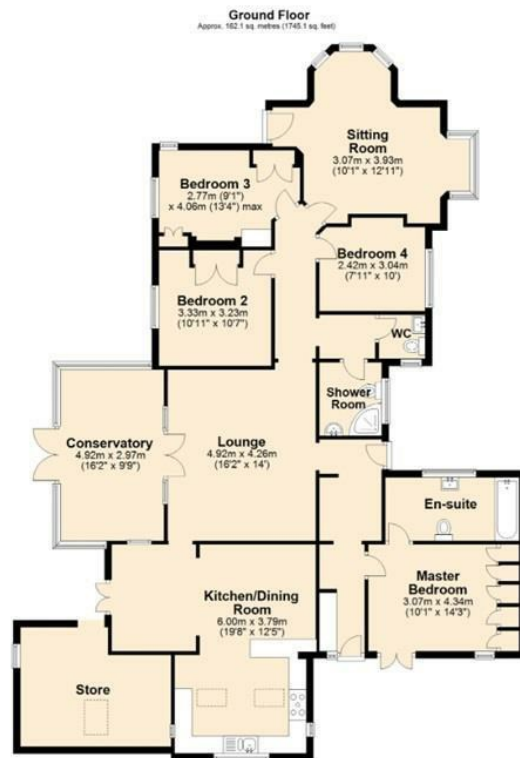


Key Features

- 19th Century Lodge
- Village Location
- Impressive Kitchen Dining Room
- Four Double Bedrooms
- Countryside Views
- Parking For Four Vehicles
- Large Mature Garden

Price Guide
£875,000





Total area: approx. 162.1 sq. metres (1745.1 sq. feet)

This plan is for layout guidance only and not drawn to scale unless stated. Window and door openings are approximate. Whilst every care is taken in preparation of this plan, please check all dimensions and shapes before making any decisions.



EPC Rating - E

Tenure - Freehold

Council Tax Band - E

Local Authority
Stratford Upon Avon District Council



We routinely refer clients to both our recommended legal firm and a panel of financial services providers. It is your decision whether you choose to deal with these companies. In making that decision, you should know that we receive a referral fee.

**SHELDON
BOSLEY
KNIGHT**

LAND AND
PROPERTY
PROFESSIONALS